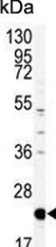


Phosphatidylethanolamine-binding protein 1 Antibody / PEBP1 / PBP / RKIP (F54963)

Catalog No.	Formulation	Size
F54963-0.4ML	In 1X PBS, pH 7.4, with 0.09% sodium azide	0.4 ml
F54963-0.08ML	In 1X PBS, pH 7.4, with 0.09% sodium azide	0.08 ml

[Bulk quote request](#)

Availability	1-3 business days
Species Reactivity	Human, Mouse
Format	Purified
Host	Rabbit
Clonality	Polyclonal (rabbit origin)
Isotype	Rabbit Ig
Purity	Purified
UniProt	P30086
Localization	Cytoplasmic
Applications	Western Blot : 1:500-1:1000 Immunohistochemistry (FFPE) : 1:50-1:100
Limitations	This Phosphatidylethanolamine-binding protein 1 antibody is available for research use only.



kDa
130
95
72
55
36
28
17

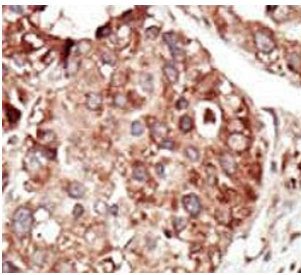
Western blot testing of mouse NIH 3T3 cell lysate with Phosphatidylethanolamine-binding protein 1 antibody. Predicted molecular weight ~21 kDa.

kDa
130
95
72
55
36
28
17

Western blot testing of human HEK293 cell lysate with Phosphatidylethanolamine-binding protein 1 antibody. Predicted molecular weight ~21 kDa.

kDa
36
28
17
10
(-) (+)

Western blot testing of 1) non-transfected and 2) transfected 293 cell lysate with Phosphatidylethanolamine-binding protein 1 antibody.



IHC testing of FFPE human cancer tissue with Phosphatidylethanolamine-binding protein 1 antibody. HIER: steam section in pH6 citrate buffer for 20 min and allow to cool prior to staining.

Description

Phosphatidylethanolamine-binding protein 1 (PBP) binds ATP, opioids and phosphatidylethanolamine, exhibiting a lower affinity for phosphatidylinositol and phosphatidylcholine. This serine protease inhibitor inhibits thrombin, neuropsin and chymotrypsin but not trypsin, tissue type plasminogen activator and elastase. PBP contains hippocampal cholinergic neurostimulating peptide (HCNP), which may be involved in the function of the presynaptic cholinergic neurons of the central nervous system. HCNP increases the production of choline acetyltransferase but not acetylcholinesterase.

Application Notes

The stated application concentrations are suggested starting points. Titration of the Phosphatidylethanolamine-binding protein 1 antibody may be required due to differences in protocols and secondary/substrate sensitivity.

Immunogen

A portion of amino acids 137-167 from the human protein was used as the immunogen for the Phosphatidylethanolamine-binding protein 1 antibody.

Storage

Aliquot the Phosphatidylethanolamine-binding protein 1 antibody and store frozen at -20°C or colder. Avoid repeated freeze-thaw cycles.

