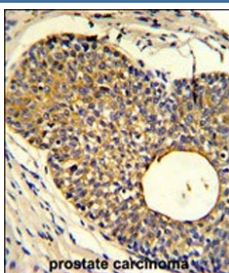


Phorbolin 1 Antibody / APOBEC3A (F55087)

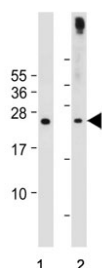
Catalog No.	Formulation	Size
F55087-0.2ML	In 1X PBS, pH 7.4, with 0.09% sodium azide	0.2 ml
F55087-0.05ML	In 1X PBS, pH 7.4, with 0.09% sodium azide	0.05 ml

Bulk quote request

Availability	1-3 business days
Species Reactivity	Human
Format	Purified
Clonality	Polyclonal (rabbit origin)
Isotype	Rabbit Ig
UniProt	P31941
Localization	Nuclear, cytoplasmic
Applications	Western Blot : 1:1000-1:2000 Immunohistochemistry (FFPE) : 1:50-1:100
Limitations	This Phorbolin 1 antibody is available for research use only.



IHC staining of FFPE human prostate carcinoma tissue with Phorbolin 1 antibody. HIER: steam section in pH6 citrate buffer for 20 min and allow to cool prior to staining.



Western blot testing of human 1) Jurkat and 2) Raji cell lysate with Phorbolin 1 antibody. Predicted molecular weight ~23 kDa.

Description

Phorbolin 1/PHO1/APOBEC3A/Apolipoprotein B mRNA Editing Enzyme, Catalytic Polypeptide-Like 3A is part of a family of enzymes that are involved in the editing of RNA and DNA molecules. Phorbolin 1/APOBEC3A specifically acts as a barrier to prevent the replication of viral DNA within cells, making it a crucial component of the innate immune system. It also plays a pivotal role in preventing the development of certain cancers. Studies have shown that this protein can inhibit the growth of cancer cells by inducing mutations in their genetic material.

Application Notes

The stated application concentrations are suggested starting points. Titration of the Phorbolin 1 antibody may be required due to differences in protocols and secondary/substrate sensitivity.

Immunogen

A portion of amino acids 1-30 from the human protein was used as the immunogen for the Phorbolin 1 antibody.

Storage

Aliquot the Phorbolin 1 antibody and store frozen at -20oC or colder. Avoid repeated freeze-thaw cycles.