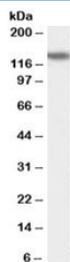


PHLPP2 Antibody (R35018)

| Catalog No. | Formulation | Size |
|--------------|---|--------|
| R35018-100UG | 0.5 mg/ml in 1X TBS, pH7.3, with 0.5% BSA (US sourced) and 0.02% sodium azide | 100 ug |

[Bulk quote request](#)

| | |
|---------------------------|--|
| Availability | 1-3 business days |
| Species Reactivity | Human |
| Format | Antigen affinity purified |
| Host | Goat |
| Clonality | Polyclonal (goat origin) |
| Isotype | Goat Ig |
| Purity | Antigen affinity |
| Gene ID | 23035 |
| Applications | Western Blot : 0.1-0.3ug/ml ELISA (peptide) LOD : 1:32000 |
| Limitations | This PHLPP2 antibody is available for research use only. |



Western blot testing of human brain (amygdala, hippocampus, substantia nigra) lysate with PHLPP2 antibody at 0.1ug/ml. Predicted molecular weight: ~134kDa.

Description

Additional name(s) for this target protein: PH domain and leucine rich repeat protein phosphatase-like; PHLPP1

Application Notes

Optimal dilution of the PHLPP2 antibody should be determined by the researcher.

Immunogen

Amino acids PHEEDRTEPPEEFD were used as the immunogen for this PHLPP2 antibody.

Storage

Aliquot and store the PHLPP2 antibody at -20oC.