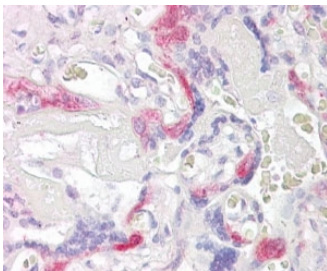


## PHLDA2 Antibody / Pleckstrin homology-like domain, family A, member 2 (R33928)

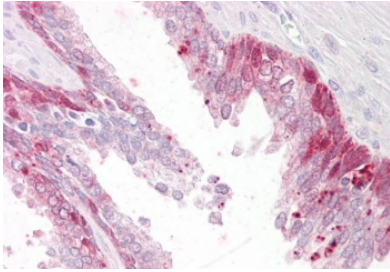
Catalog No.	Formulation	Size
R33928-100UG	0.5 mg/ml in 1X TBS, pH7.3, with 0.5% BSA (US sourced) and 0.02% sodium azide	100 ug

[Bulk quote request](#)

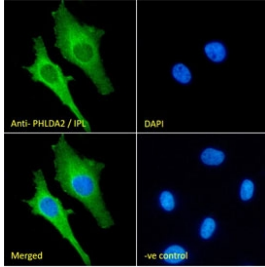
<b>Availability</b>	1-3 business days
<b>Species Reactivity</b>	Human
<b>Format</b>	Antigen affinity purified
<b>Host</b>	Goat
<b>Clonality</b>	Polyclonal (goat origin)
<b>Isotype</b>	Goat Ig
<b>Purity</b>	Antigen affinity
<b>Gene ID</b>	7262
<b>Applications</b>	Immunohistochemistry (FFPE) : 3-6ug/ml Western Blot : 2-3ug/ml Immunofluorescence : 10ug/ml Flow Cytometry : 10ug/ml ELISA (peptide) LOD : 1:32000
<b>Limitations</b>	This PHLDA2 antibody is available for research use only.



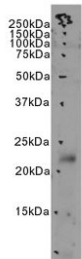
IHC testing of FFPE human placental tissue with PHLDA2 antibody at 4ug/ml. HIER: steamed with pH6 citrate buffer, AP-staining.



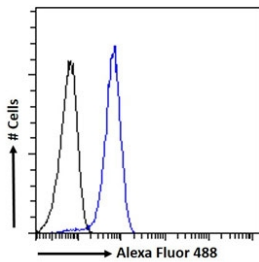
IHC testing of FFPE human prostate tissue with PHLDA2 antibody at 4ug/ml. HIER: steamed with pH6 citrate buffer, AP-staining.



IF/ICC staining of fixed and permeabilized human HeLa cells with PHLDA2 antibody (green) at 10ug/ml and DAPI nuclear stain (blue).



Western blot testing of human MDA-MB-231 cell lysate with PHLDA2 antibody. Predicted molecular weight ~17 kDa.



FACS testing of fixed and permeabilized human MCF7 cells with PHLDA2 antibody (blue) at 10ug/ml and naive goat Ig (black).

## Description

Additional name(s) for this target protein: Pleckstrin homology-like domain family A member 2; TSSC3; IPL; BRW1C; BWR1C; HLDA2

## Application Notes

Optimal dilution of the PHLDA2 antibody should be determined by the researcher.

## Immunogen

Amino acids EPSRPSPQPKRTP were used as the immunogen for this PHLDA2 antibody.

## Storage

Aliquot and store the PHLDA2 antibody at -20oC.

