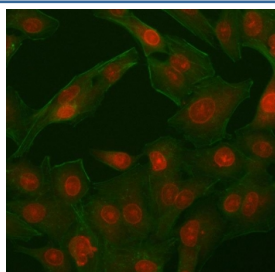


PHF11 Antibody / PHD finger protein 11 (RQ8646)

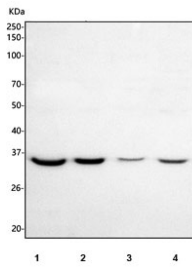
Catalog No.	Formulation	Size
RQ8646	0.5mg/ml if reconstituted with 0.2ml sterile DI water	100 ug

Bulk quote request

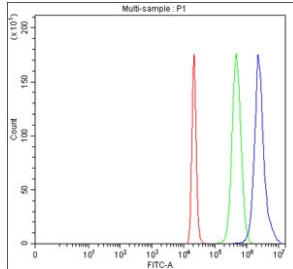
Availability	1-3 days
Species Reactivity	Human
Format	Antigen affinity purified
Clonality	Polyclonal (rabbit origin)
Isotype	Rabbit IgG
Purity	Antigen affinity chromatography
Buffer	Lyophilized from 1X PBS with 2% Trehalose
UniProt	Q9UIL8
Localization	Nuclear
Applications	Western Blot : 1-2ug/ml Immunofluorescence : 5ug/ml Flow Cytometry : 1-3ug/million cells ELISA : 0.1-0.5ug/ml
Limitations	This PHF11 antibody is available for research use only.



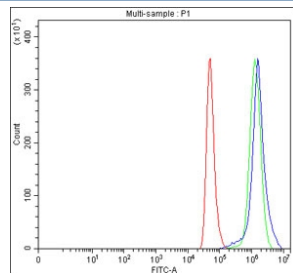
Immunofluorescent staining of FFPE human A549 cells with PHF11 antibody (red) and Phalloidin (green). HIER: steam section in pH6 citrate buffer for 20 min.



Western blot testing of human 1) HeLa, 2) 293T, 3) Jurkat and 4) RT4 cell lysate with PHF11 antibody. Predicted molecular weight ~37 kDa.



Flow cytometry testing of fixed and permeabilized human 293T cells with PHF11 antibody at 1ug/million cells (blocked with goat sera); Red=cells alone, Green=isotype control, Blue= PHF11 antibody.



Flow cytometry testing of fixed and permeabilized human HeLa cells with PHF11 antibody at 1ug/million cells (blocked with goat sera); Red=cells alone, Green=isotype control, Blue= PHF11 antibody.

Description

This gene encodes a protein containing a PHD (plant homeodomain) type zinc finger. This gene has been identified in some studies as a candidate gene for asthma. Naturally-occurring readthrough transcription may occur from the upstream SETDB2 (SET domain bifurcated 2) gene to this locus. Alternative splicing results in multiple transcript variants.

Application Notes

Optimal dilution of the PHF11 antibody should be determined by the researcher.

Immunogen

An E.coli-derived human recombinant protein (amino acids M1-K284) was used as the immunogen for the PHF11 antibody.

Storage

After reconstitution, the PHF11 Antibody can be stored for up to one month at 4oC. For long-term, aliquot and store at -20oC. Avoid repeated freezing and thawing.

