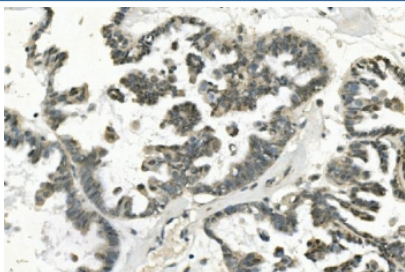


PHEX Antibody / HYP / PEX (RQ5999)

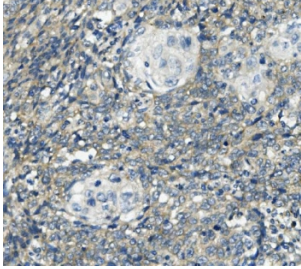
Catalog No.	Formulation	Size
RQ5999	0.5mg/ml if reconstituted with 0.2ml sterile DI water	100 ug

[Bulk quote request](#)

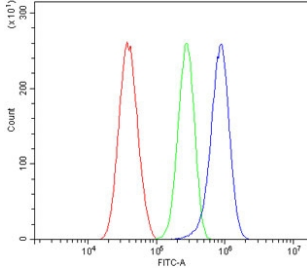
Availability	1-3 business days
Species Reactivity	Human, Mouse, Rat
Format	Antigen affinity purified
Host	Rabbit
Clonality	Polyclonal (rabbit origin)
Isotype	Rabbit IgG
Purity	Affinity purified
Buffer	Lyophilized from 1X PBS with 2% Trehalose and 0.025% sodium azide
UniProt	P78562
Applications	Western Blot : 0.5-1ug/ml Immunohistochemistry : 1-2ug/ml Flow Cytometry : 1-3ug/million cells Direct ELISA : 0.1-0.5ug/ml
Limitations	This PHEX antibody is available for research use only.



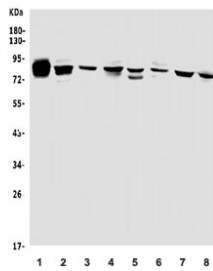
IHC staining of FFPE human ovarian cancer with PHEX antibody. HIER: boil tissue sections in pH8 EDTA for 20 min and allow to cool before testing.



IHC staining of FFPE human lung cancer with PHEX antibody. HIER: boil tissue sections in pH8 EDTA for 20 min and allow to cool before testing.



Flow cytometry testing of human A549 cells with PHEX antibody at 1ug/million cells (blocked with goat sera); Red=cells alone, Green=isotype control, Blue= PHEX antibody.



Western blot testing of 1) rat ovary, 2) rat kidney, 3) mouse ovary, 4) mouse kidney, 5) human HEK293, 6) monkey kidney, 7) rat NRK and 8) monkey COS-7 cell lysate with PHEX antibody. Predicted molecular weight ~86 kDa.

Description

Phosphate-regulating neutral endopeptidase, X-linked also known as phosphate-regulating gene with homologies to endopeptidases on the X chromosome or metalloendopeptidase homolog PEX is an enzyme that in humans is encoded by the PHEX gene. It is mapped to Xp22.11. The protein encoded by this gene is a transmembrane endopeptidase that belongs to the type II integral membrane zinc-dependent endopeptidase family. The protein is thought to be involved in bone and dentin mineralization and renal phosphate reabsorption. Mutations in this gene cause X-linked hypophosphatemic rickets. Alternative splicing results in multiple transcript variants.

Application Notes

Optimal dilution of the PHEX antibody should be determined by the researcher.

Immunogen

Recombinant human protein (amino acids E145-N718) was used as the immunogen for the PHEX antibody.

Storage

After reconstitution, the PHEX antibody can be stored for up to one month at 4°C. For long-term, aliquot and store at -20°C. Avoid repeated freezing and thawing.

