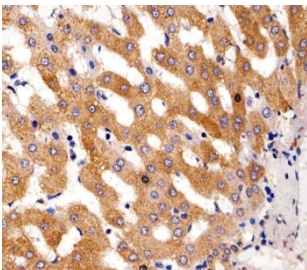


Phenylalanine hydroxylase Antibody / PAH [clone 717CT21.1.1] (F54526)

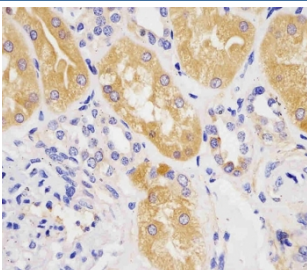
Catalog No.	Formulation	Size
F54526-0.4ML	In 1X PBS, pH 7.4, with 0.09% sodium azide	0.4 ml
F54526-0.08ML	In 1X PBS, pH 7.4, with 0.09% sodium azide	0.08 ml

[Bulk quote request](#)

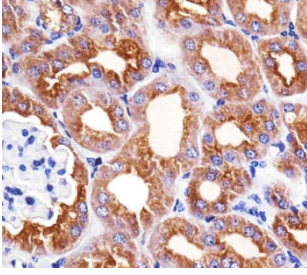
Availability	1-3 business days
Species Reactivity	Human, Mouse, Rat
Format	Purified
Host	Mouse
Clonality	Monoclonal (mouse origin)
Isotype	IgG1, kappa
Clone Name	717CT21.1.1
Purity	Protein G affinity
UniProt	P00439
Applications	Immunohistochemistry (FFPE) : 1:25 Western Blot : 1:500-1:2000
Limitations	This Phenylalanine hydroxylase antibody is available for research use only.



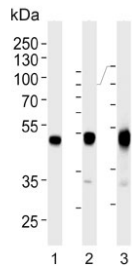
IHC testing of FFPE human liver tissue with Phenylalanine hydroxylase antibody. HIER: steam section in pH6 citrate buffer for 20 min and allow to cool prior to staining.



IHC testing of FFPE human kidney tissue with Phenylalanine hydroxylase antibody. HIER: steam section in pH6 citrate buffer for 20 min and allow to cool prior to staining.



IHC testing of FFPE mouse kidney tissue with Phenylalanine hydroxylase antibody.
HIER: steam section in pH6 citrate buffer for 20 min and allow to cool prior to staining.



Western blot testing of 1) human HepG2, 2) mouse liver and 3) rat liver lysate with Phenylalanine hydroxylase antibody. Predicted molecular weight ~52 kDa.

Description

Phenylalanine hydroxylase / PAH catalyzes the hydroxylation of L-phenylalanine to L-tyrosine. [UniProt]

Application Notes

The stated application concentrations are suggested starting points. Titration of the Phenylalanine hydroxylase antibody may be required due to differences in protocols and secondary/substrate sensitivity.

Immunogen

Recombinant human protein was used as the immunogen for the Phenylalanine hydroxylase antibody.

Storage

Aliquot the Phenylalanine hydroxylase antibody and store frozen at -20°C or colder. Avoid repeated freeze-thaw cycles.