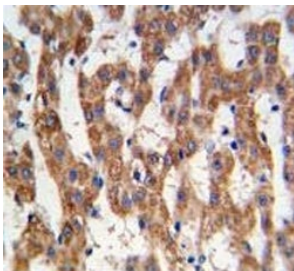


PHB Antibody (F48124)

Catalog No.	Formulation	Size
F48124-0.4ML	In 1X PBS, pH 7.4, with 0.09% sodium azide	0.4 ml
F48124-0.08ML	In 1X PBS, pH 7.4, with 0.09% sodium azide	0.08 ml

[Bulk quote request](#)

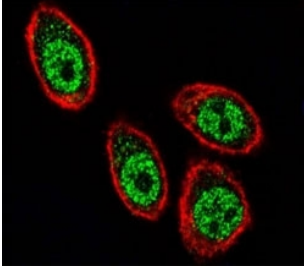
Availability	1-3 business days
Species Reactivity	Human
Predicted Reactivity	Bovine, Chicken
Format	Purified
Host	Rabbit
Clonality	Polyclonal (rabbit origin)
Isotype	Rabbit Ig
Purity	Purified
UniProt	P35232
Applications	IHC (Paraffin) : 1:10-1:50 Western Blot : 1:1000 Immunofluorescence : 1:10-1:50 Flow Cytometry : 1:10-1:50
Limitations	This PHB antibody is available for research use only.



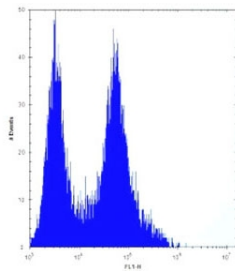
IHC analysis of FFPE human hepatocarcinoma tissue stained with PHB antibody



Western blot testing of PHB antibody and HeLa cell lysate. Predicted molecular weight ~28 kDa.



Confocal immunofluorescent analysis of PHB antibody with HeLa cells followed by Alexa Fluor 488-conjugated goat anti-rabbit IgG (green). Actin filaments have been labeled with Alexa Fluor 555 Phalloidin (red).



PHB antibody flow cytometric analysis of HeLa cells (right histogram) compared to a negative control (left histogram). FITC-conjugated goat-anti-rabbit secondary Ab was used for the analysis.

Description

Prohibitin is an evolutionarily conserved protein that is ubiquitously expressed. It is thought to be a negative regulator of cell proliferation and may be a tumor suppressor. Mutations have been linked to sporadic breast cancer. Prohibitin is expressed as two transcripts with varying lengths of 3' untranslated region.

Application Notes

Titration of the PHB antibody may be required due to differences in protocols and secondary/substrate sensitivity.

Immunogen

A portion of amino acids 89-117 from the human protein was used as the immunogen for this PHB antibody.

Storage

Aliquot the PHB antibody and store frozen at -20°C or colder. Avoid repeated freeze-thaw cycles.