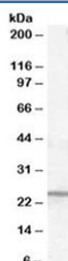


PGRMC1 Antibody (R33917)

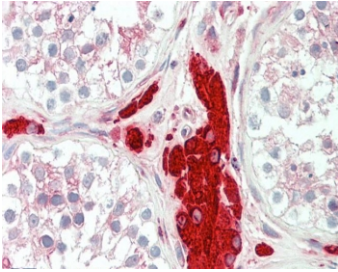
Catalog No.	Formulation	Size
R33917-100UG	0.5 mg/ml in 1X TBS, pH7.3, with 0.5% BSA (US sourced) and 0.02% sodium azide	100 ug

[Bulk quote request](#)

Availability	1-3 business days
Species Reactivity	Human
Predicted Reactivity	Mouse, Rat
Format	Antigen affinity purified
Clonality	Polyclonal (goat origin)
Isotype	Goat Ig
Purity	Antigen affinity
Gene ID	10857
Localization	Cytoplasmic
Applications	Western Blot : 0.1-0.3 ug/ml IHC (FFPE) : 5ug/ml ELISA (peptide) LOD : 1:4000
Limitations	This PGRMC1 antibody is available for research use only.



Western blot testing of human kidney lysate with PGRMC1 antibody at 0.1ug/ml.
Predicted molecular weight: ~22 kDa.



IHC testing of FFPE human testis tissue with PGRMC1 antibody at 5ug/ml. Required HIER: steamed antigen retrieval with pH6 citrate buffer; AP-staining.

Description

Additional name(s) for this target protein: Progesterone receptor membrane component 1

Application Notes

Optimal dilution of the PGRMC1 antibody should be determined by the researcher.

Immunogen

Amino acids EPKDESARKND were used as the immunogen for this PGRMC1 antibody.

Storage

Aliquot and store the PGRMC1 antibody at -20oC.