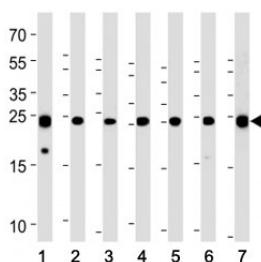


PGP9.5 Antibody (F47952)

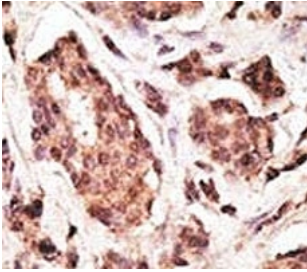
Catalog No.	Formulation	Size
F47952-0.4ML	In 1X PBS, pH 7.4, with 0.09% sodium azide	0.4 ml
F47952-0.08ML	In 1X PBS, pH 7.4, with 0.09% sodium azide	0.08 ml

[Bulk quote request](#)

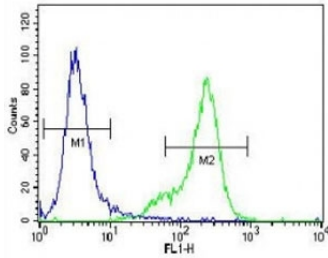
Availability	1-3 business days
Species Reactivity	Human, Mouse
Predicted Reactivity	Rat, Bovine, Pig, Primate
Format	Antigen affinity purified
Host	Rabbit
Clonality	Polyclonal (rabbit origin)
Isotype	Rabbit Ig
Purity	Antigen affinity
UniProt	P09936
Applications	Western Blot : 1:1000 IHC (Paraffin) : 1:50-1:100 Flow Cytometry : 1:10-1:50 Immunofluorescence : 1:10-1:50
Limitations	This PGP9.5 antibody is available for research use only.



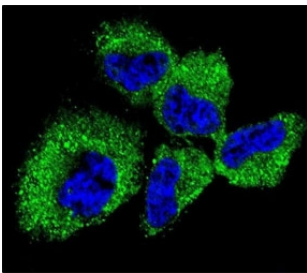
PGP9.5 antibody western blot analysis with (1) U266, (2) SH-SY5Y, (3) NCI-H1299, (4) mouse Neuro-2a, (5) rat C6, (6) PC-12 cell line and (7) mouse brain tissue lysate. Predicted molecular weight ~25 kDa.



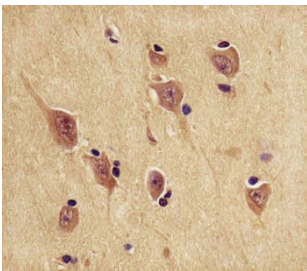
IHC analysis of FFPE human breast carcinoma tissue stained with the PGP9.5 antibody



PGP9.5 antibody flow cytometric analysis of NCI-H460 cells (right histogram) compared to a negative control (left histogram). FITC-conjugated goat-anti-rabbit secondary Ab was used for the analysis.



Confocal immunofluorescent analysis of PGP9.5 antibody with NCI-H460 cells followed by Alexa Fluor 488-conjugated goat anti-rabbit IgG (green). DAPI was used as a nuclear counterstain (blue).



IHC analysis of FFPE human brain tissue stained with the PGP9.5 antibody

Description

UCHL1 is a member of a gene family whose products hydrolyze small C-terminal adducts of ubiquitin to generate the ubiquitin monomer. Expression of UCHL1 is highly specific to neurons and to cells of the diffuse neuroendocrine system and their tumors. It is present in all neurons.

Application Notes

Titration of the PGP9.5 antibody may be required due to differences in protocols and secondary/substrate sensitivity.

Immunogen

A portion of amino acids 187-216 from the human protein was used as the immunogen for this PGP9.5 antibody.

Storage

Aliquot the PGP9.5 antibody and store frozen at -20°C or colder. Avoid repeated freeze-thaw cycles.

