

## PGP Antibody (F51955)

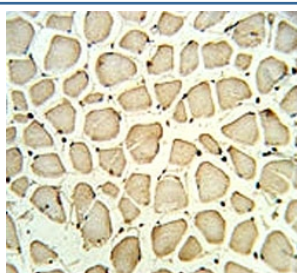
Catalog No.	Formulation	Size
F51955-0.4ML	In 1X PBS, pH 7.4, with 0.09% sodium azide	0.4 ml
F51955-0.08ML	In 1X PBS, pH 7.4, with 0.09% sodium azide	0.08 ml

**Bulk quote request**

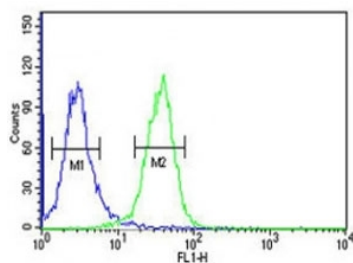
<b>Availability</b>	1-3 business days
<b>Species Reactivity</b>	Human
<b>Format</b>	Antigen affinity purified
<b>Clonality</b>	Polyclonal (rabbit origin)
<b>Isotype</b>	Rabbit Ig
<b>Purity</b>	Antigen affinity
<b>UniProt</b>	A6NDG6
<b>Applications</b>	Western Blot : 1:1000 IHC (Paraffin) : 1:50-1:100 Flow Cytometry : 1:10-1:50
<b>Limitations</b>	This PGP antibody is available for research use only.



Western blot analysis of PGP antibody and K562 lysate



PGP antibody IHC analysis in formalin fixed and paraffin embedded skeletal muscle.



PGP antibody flow cytometric analysis of K562 cells (green) compared to a [negative control](#) (blue). FITC-conjugated goat-anti-rabbit secondary Ab was used for the analysis.

## Description

PGP is a phosphatase with broad substrate specificity and has high phosphatase activity toward ADP, ATP, GDP, GTP and p-nitrophenylphosphate. Has tyrosine-protein phosphatase activity (in vitro).[UniProt]

## Application Notes

Titration of the PGP antibody may be required due to differences in protocols and secondary/substrate sensitivity.

## Immunogen

A portion of amino acids 33-62 from the human protein was used as the immunogen for this PGP antibody.

## Storage

Aliquot the PGP antibody and store frozen at -20oC or colder. Avoid repeated freeze-thaw cycles.