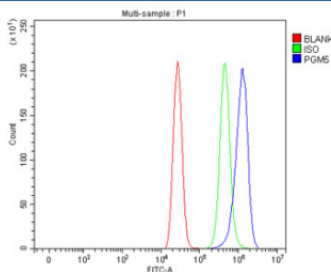


PGM5 Antibody / Phosphoglucomutase 5 / Aciculin (RQ8873)

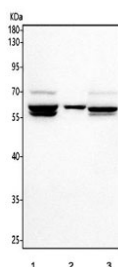
Catalog No.	Formulation	Size
RQ8873	0.5mg/ml if reconstituted with 0.2ml sterile DI water	100 ug

[Bulk quote request](#)

Availability	1-3 days
Species Reactivity	Human
Format	Antigen affinity purified
Host	Rabbit
Clonality	Polyclonal (rabbit origin)
Isotype	Rabbit IgG
Purity	Antigen affinity chromatography
Buffer	Lyophilized from 1X PBS with 2% Trehalose
UniProt	Q15124
Applications	Western Blot : 1-2ug/ml Flow Cytometry : 1-3ug/million cells ELISA : 0.1-0.5ug/ml
Limitations	This PGM5 antibody is available for research use only.



Flow cytometry testing of fixed and permeabilized human MCF7 cells with PGM5 antibody at 1ug/million cells (blocked with goat sera); Red=cells alone, Green=isotype control, Blue= PGM5 antibody.



Western blot testing of human 1) PC-3, 2) U-2 OS and 3) MCF7 cell lysate with PGM5 antibody. Predicted molecular weight ~62 kDa.

Description

Phosphoglucomutase-like protein 5 is an enzyme that in humans is encoded by the PGM5 gene. Phosphoglucomutases (EC 5.2.2.2.), such as PGM5, are phosphotransferases involved in interconversion of glucose-1-phosphate and glucose-6-phosphate. PGM activity is essential in formation of carbohydrates from glucose-6-phosphate and in formation of glucose-6-phosphate from galactose and glycogen (Edwards et al., 1995 [PubMed 8586438]).

Application Notes

Optimal dilution of the PGM5 antibody should be determined by the researcher.

Immunogen

An E.coli-derived human recombinant protein (amino acids Q37-H555) was used as the immunogen for the PGM5 antibody.

Storage

After reconstitution, the PGM5 antibody can be stored for up to one month at 4oC. For long-term, aliquot and store at -20oC. Avoid repeated freezing and thawing.