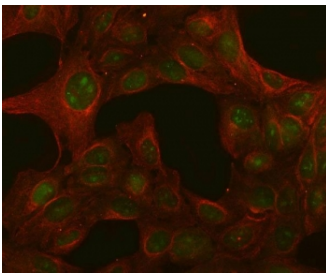


## PGLS Antibody / 6-phosphogluconolactonase / 6PGL (RQ8680)

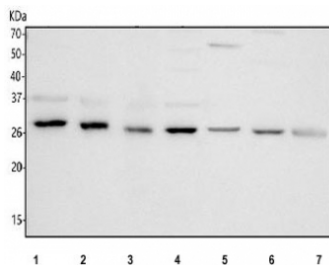
Catalog No.	Formulation	Size
RQ8680	0.5mg/ml if reconstituted with 0.2ml sterile DI water	100 ug

### Bulk quote request

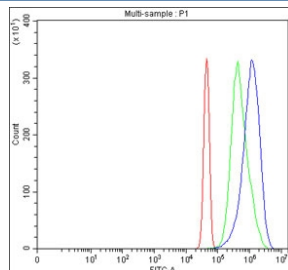
<b>Availability</b>	1-3 days
<b>Species Reactivity</b>	Human, Mouse, Rat
<b>Format</b>	Antigen affinity purified
<b>Host</b>	Rabbit
<b>Clonality</b>	Polyclonal (rabbit origin)
<b>Isotype</b>	Rabbit IgG
<b>Purity</b>	Antigen affinity chromatography
<b>Buffer</b>	Lyophilized from 1X PBS with 2% Trehalose
<b>UniProt</b>	O95336
<b>Localization</b>	Nuclear, cytoplasmic
<b>Applications</b>	Western Blot : 1-2ug/ml Immunofluorescence : 5ug/ml Flow Cytometry : 1-3ug/million cells ELISA : 0.1-0.5ug/ml
<b>Limitations</b>	This PGLS antibody is available for research use only.



Immunofluorescent staining of FFPE human U-2 OS cells with PGLS antibody (green) and Beta Actin mAb (red). HIER: steam section in pH6 citrate buffer for 20 min.



Western blot testing of 1) human Jurkat, 2) human Ramos, 3) human CCRF-CEM, 4) human U-251, 5) rat liver, 6) rat heart and 7) mouse liver tissue lysate with PGLS antibody. Predicted molecular weight ~28 kDa.



Flow cytometry testing of fixed and permeabilized human JK cells with PGLS antibody at 1ug/million cells (blocked with goat sera); Red=cells alone, Green=isotype control, Blue=PGLS antibody.

## Description

PGLS belongs to the glucosamine/galactosamine-6-phosphate isomerase family, 6-phosphogluconolactonase subfamily. It is implicated in the hydrolysis of 6-phosphogluconolactone to 6-phosphogluconate.

## Application Notes

Optimal dilution of the PGLS antibody should be determined by the researcher.

## Immunogen

An E.coli-derived human recombinant protein (amino acids Q16-L258) was used as the immunogen for the PGLS antibody.

## Storage

After reconstitution, the PGLS Antibody can be stored for up to one month at 4oC. For long-term, aliquot and store at -20oC. Avoid repeated freezing and thawing.