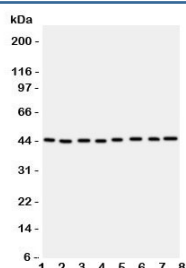


## PGK1 Antibody / Phosphoglycerate kinase 1 (R31155)

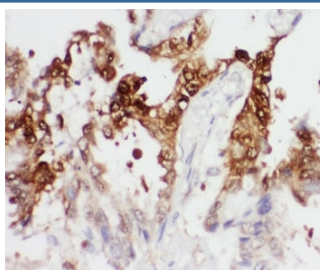
Catalog No.	Formulation	Size
R31155	0.5mg/ml if reconstituted with 0.2ml sterile DI water	100 ug

**Bulk quote request**

<b>Availability</b>	1-3 business days
<b>Species Reactivity</b>	Human, Mouse, Rat
<b>Format</b>	Antigen affinity purified
<b>Host</b>	Rabbit
<b>Clonality</b>	Polyclonal (rabbit origin)
<b>Isotype</b>	Rabbit IgG
<b>Purity</b>	Antigen affinity
<b>Buffer</b>	Lyophilized from 1X PBS with 2.5% BSA and 0.025% sodium azide/thimerosal
<b>UniProt</b>	P00558
<b>Localization</b>	Nuclear, cytoplasmic
<b>Applications</b>	Western Blot : 0.5-1ug/ml IHC (FFPE) : 0.5-1ug/ml
<b>Limitations</b>	This PGK1 antibody is available for research use only.



Western blot testing of PGK1 antibody; Lane 1: rat liver; 2: (r) brain; 3: (r) lung; and human samples 4: A431; 5: COLO320; 6: HeLa; 7: A549; 8: Jurkat cell lysate. Expected/observed molecular weight ~44kDa.



IHC-P: PGK1 antibody testing of human lung cancer tissue. HIER: steamed with pH6 citrate buffer.

## Description

Phosphoglycerate Kinase 1, also known as PGKA, is an enzyme that in humans is encoded by the PGK1 gene. Willard et al. (1985) used a cDNA for human PGK to map the functional PGK1 gene to Xq13. Disulfide bonds in secreted proteins are considered to be inert because of the oxidizing nature of the extracellular milieu. An exception to this rule is a reductase secreted by tumor cells that reduces disulfide bonds in the serine proteinase plasmin. Lay et al. (2000) showed that the plasmin reductase isolated from conditioned medium of fibrosarcoma cells is the glycolytic enzyme phosphoglycerate kinase. Recombinant phosphoglycerate kinase had the same specific activity as the fibrosarcoma-derived protein. Plasma of mice bearing fibrosarcoma tumors contained several-fold more phosphoglycerate kinase, as compared with mice without tumors.

## Application Notes

The stated application concentrations are suggested starting amounts. Titration of the PGK1 antibody may be required due to differences in protocols and secondary/substrate sensitivity.

## Immunogen

An amino acid sequence from the middle region of human Phosphoglycerate Kinase 1 (FGTAHRAHSSMVGVN) was used as the immunogen for this PGK1 antibody (100% homologous in human, mouse and rat).

## Storage

After reconstitution, the PGK1 antibody can be stored for up to one month at 4°C. For long-term, aliquot and store at -20°C. Avoid repeated freezing and thawing.