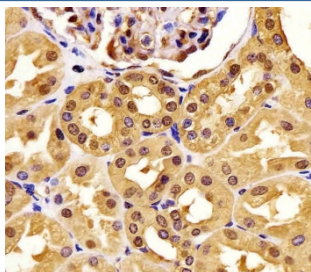


## PGK1 Antibody / Phosphoglycerate kinase 1 [clone 1086CT10.2.1] (F54493)

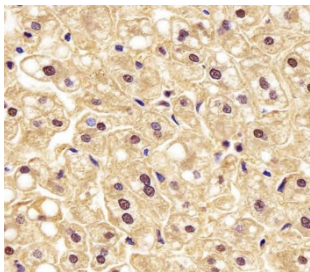
Catalog No.	Formulation	Size
F54493-0.2ML	In 1X PBS, pH 7.4, with 0.09% sodium azide	0.2 ml
F54493-0.05ML	In 1X PBS, pH 7.4, with 0.09% sodium azide	0.05 ml

**Bulk quote request**

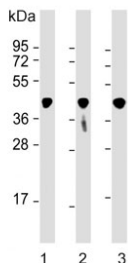
<b>Availability</b>	1-3 business days
<b>Species Reactivity</b>	Human, Mouse
<b>Format</b>	Purified
<b>Clonality</b>	Monoclonal (mouse origin)
<b>Isotype</b>	IgG2a, kappa
<b>Clone Name</b>	1086CT10.2.1
<b>Purity</b>	Protein G affinity
<b>UniProt</b>	P00558
<b>Localization</b>	Cytoplasmic
<b>Applications</b>	Western Blot : 1:500-1:2000 Flow Cytometry : 1:25 (1x10e6 cells) Immunohistochemistry (FFPE) : 1:25
<b>Limitations</b>	This PGK1 antibody is available for research use only.



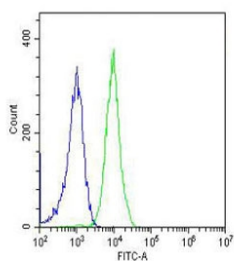
IHC testing of FFPE human kidney tissue with PGK1 antibody. HIER: steam section in pH6 citrate buffer for 20 min and allow to cool prior to staining.



IHC testing of FFPE human liver tissue with PGK1 antibody. HIER: steam section in pH6 citrate buffer for 20 min and allow to cool prior to staining.



Western blot testing of 1) human HEK293, 2) human A431 and 3) mouse brain lysate with PGK1 antibody. Predicted molecular weight ~44 kDa.



Flow cytometry testing of fixed and permeabilized human Jurkat cells with PGK1 antibody; Blue=isotype control, Green= PGK1 antibody.

## Description

In addition to its role as a glycolytic enzyme, it seems that PGK-1 acts as a polymerase alpha cofactor protein (primer recognition protein).

## Application Notes

The stated application concentrations are suggested starting points. Titration of the PGK1 antibody may be required due to differences in protocols and secondary/substrate sensitivity.

## Immunogen

Recombinant human protein was used as the immunogen for the PGK1 antibody.

## Storage

Aliquot the PGK1 antibody and store frozen at -20oC or colder. Avoid repeated freeze-thaw cycles.