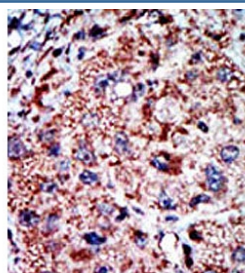


PFKL Antibody / ATP-PFK / ATP-dependent 6-phosphofructokinase liver type (F55104)

Catalog No.	Formulation	Size
F55104-0.4ML	In 1X PBS, pH 7.4, with 0.09% sodium azide	0.4 ml
F55104-0.08ML	In 1X PBS, pH 7.4, with 0.09% sodium azide	0.08 ml

Bulk quote request

Availability	1-3 business days
Species Reactivity	Human
Format	Purified
Clonality	Polyclonal (rabbit origin)
Isotype	Rabbit Ig
UniProt	P17858
Localization	Cytoplasm
Applications	Western Blot : 1:500-1:1000 Immunohistochemistry (FFPE) : 1:50-1:100
Limitations	This PFKL antibody is available for research use only.



IHC staining of FFPE human cancer tissue with PFKL antibody. HIER: steam section in pH6 citrate buffer for 20 min and allow to cool prior to staining.



Western blot testing of human HepG2 cell lysate with PFKL antibody. Predicted molecular weight ~85 kDa.

Description

The PFKL protein is an enzyme that catalyzes the conversion of fructose-6-phosphate to fructose-1,6-bisphosphate, a key step in the glycolytic pathway. It also plays a role in regulating glucose metabolism, which is crucial for maintaining healthy blood sugar levels. Dysregulation of the PFKL protein has been linked to metabolic disorders such as diabetes and obesity. While it is primarily found in the liver, where it helps regulate glucose production, it is also found in other tissues such as skeletal muscle and adipose tissue.

Application Notes

The stated application concentrations are suggested starting points. Titration of the PFKL antibody may be required due to differences in protocols and secondary/substrate sensitivity.

Immunogen

A portion of amino acids 669-699 from the human protein was used as the immunogen for the PFKL antibody.

Storage

Aliquot the PFKL antibody and store frozen at -20°C or colder. Avoid repeated freeze-thaw cycles.