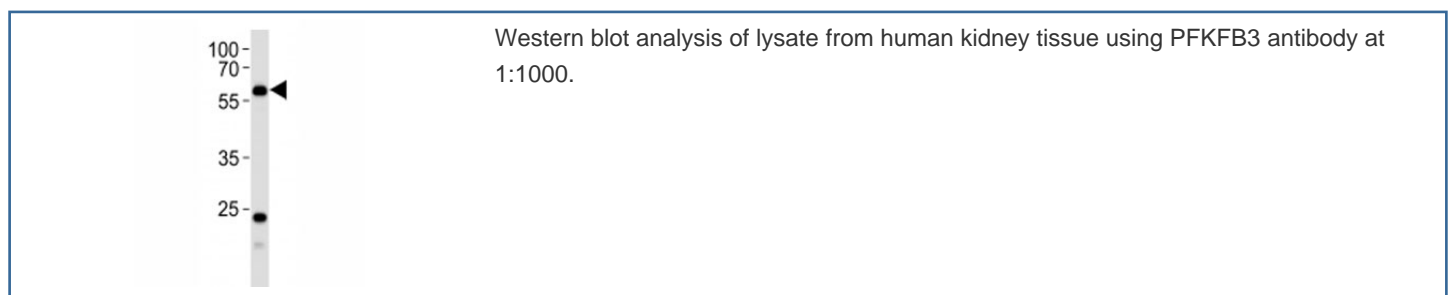
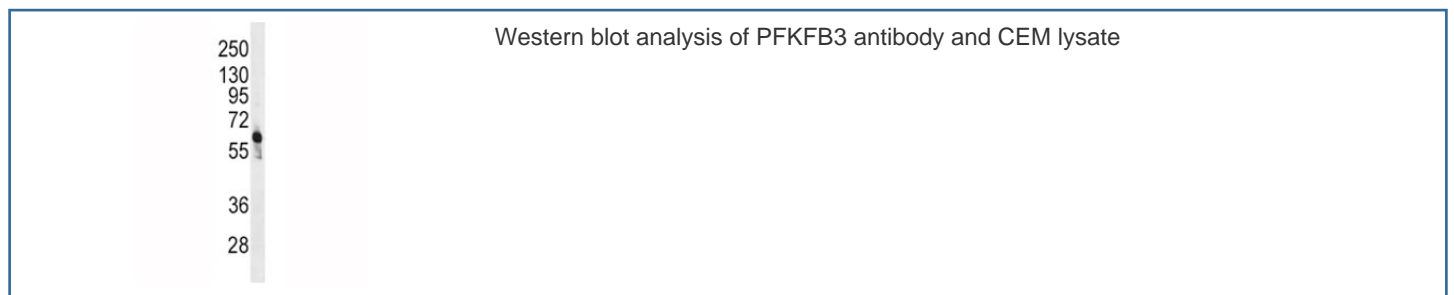


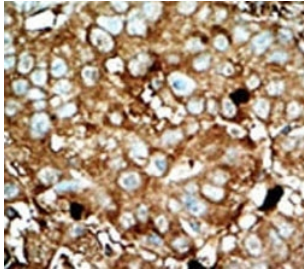
PFKFB3 Antibody (F51072)

Catalog No.	Formulation	Size
F51072-0.4ML	In 1X PBS, pH 7.4, with 0.09% sodium azide	0.4 ml
F51072-0.08ML	In 1X PBS, pH 7.4, with 0.09% sodium azide	0.08 ml

[Bulk quote request](#)

Availability	1-3 business days
Species Reactivity	Human
Predicted Reactivity	Rat
Format	Purified
Clonality	Polyclonal (rabbit origin)
Isotype	Rabbit Ig
Purity	Purified
UniProt	Q16875
Applications	Western Blot : 1:1000 IHC (Paraffin) : 1:50-1:100
Limitations	This PFKFB3 antibody is available for research use only.





IHC analysis of FFPE human hepatocarcinoma tissue stained with the PFKFB3 antibody

Description

Protein kinases are enzymes that transfer a phosphate group from a phosphate donor, generally the γ phosphate of ATP, onto an acceptor amino acid in a substrate protein. By this basic mechanism, protein kinases mediate most of the signal transduction in eukaryotic cells, regulating cellular metabolism, transcription, cell cycle progression, cytoskeletal rearrangement and cell movement, apoptosis, and differentiation. With more than 500 gene products, the protein kinase family is one of the largest families of proteins in eukaryotes. The family has been classified in 8 major groups based on sequence comparison of their tyrosine (PTK) or serine/threonine (STK) kinase catalytic domains. The AGC kinase group consists of 63 kinases including the cyclic nucleotide-regulated protein kinase (PKA & PKG) family, the diacylglycerol-activated/phospholipid-dependent protein kinase C (PKC) family, the related to PKA and PKC (RAC/Akt) protein kinase family, the kinases that phosphorylate G protein-coupled receptors family (ARK), and the kinases that phosphorylate ribosomal protein S6 family (RSK).

Application Notes

Titration of the PFKFB3 antibody may be required due to differences in protocols and secondary/substrate sensitivity.

Immunogen

A portion of amino acids 454-484 from the human protein was used as the immunogen for this PFKFB3 antibody.

Storage

Aliquot the PFKFB3 antibody and store frozen at -20°C or colder. Avoid repeated freeze-thaw cycles.