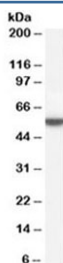


Perilipin Antibody / PLIN1 (R35133)

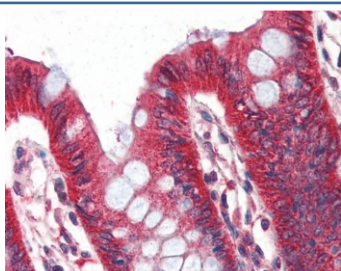
Catalog No.	Formulation	Size
R35133-100UG	0.5 mg/ml in 1X TBS, pH7.3, with 0.5% BSA (US sourced) and 0.02% sodium azide	100 ug

[Bulk quote request](#)

Availability	1-3 business days
Species Reactivity	Human
Format	Antigen affinity purified
Clonality	Polyclonal (goat origin)
Isotype	Goat Ig
Purity	Antigen affinity
Gene ID	5346
Localization	Cytoplasmic (lipid droplet, ER)
Applications	Western Blot : 0.01-0.1 ug/ml IHC (FFPE) : 2ug/ml ELISA (peptide) LOD : 1:128000
Limitations	This Perilipin antibody is available for research use only.



Western blot testing of human adipose lysate with Perilipin antibody at 0.01ug/ml. Predicted molecular weight ~56 kDa.



IHC testing of FFPE human colon tissue with Perilipin antibody at 2ug/ml. Required HIER: steamed antigen retrieval with pH6 citrate buffer; AP-staining.

Description

Additional name(s) for this target protein: PERI; PLIN, PLIN1, Perilipin, Perilipin 1

Application Notes

Optimal dilution of the Perilipin antibody should be determined by the researcher.

Immunogen

Amino acids PREKPKRRVSDS were used as the immunogen for this Perilipin antibody.

Storage

Aliquot and store the Perilipin antibody at -20oC.