

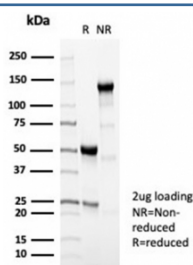
## Perforin Antibody / PRF1 [clone PRF1/7077R] (V8967)

Catalog No.	Formulation	Size
V8967-100UG	0.2 mg/ml in 1X PBS with 0.1 mg/ml BSA (US sourced), 0.05% sodium azide	100 ug
V8967-20UG	0.2 mg/ml in 1X PBS with 0.1 mg/ml BSA (US sourced), 0.05% sodium azide	20 ug
V8967SAF-100UG	1 mg/ml in 1X PBS; BSA free, sodium azide free	100 ug

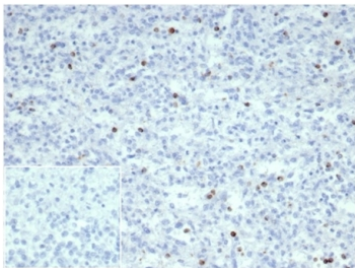
Recombinant **RABBIT MONOCLONAL**

[Bulk quote request](#)

<b>Availability</b>	1-3 business days
<b>Species Reactivity</b>	Human
<b>Format</b>	Purified
<b>Clonality</b>	Recombinant Rabbit Monoclonal
<b>Isotype</b>	Rabbit IgG, kappa
<b>Clone Name</b>	PRF1/7077R
<b>Purity</b>	Protein A/G affinity
<b>UniProt</b>	P14222
<b>Localization</b>	Cytoplasm
<b>Applications</b>	Immunohistochemistry (FFPE) : 1-2ug/ml
<b>Limitations</b>	This PRF1 antibody is available for research use only.



SDS-PAGE analysis of purified, BSA-free PRF1 antibody (PRF1/7077R) as confirmation of integrity and purity.



IHC staining of FFPE human spleen tissue with PRF1 antibody(clone PRF1/7077R).  
Negative control inset: PBS instead of primary antibody to control for secondary binding.  
HIER: boil tissue sections in pH 9 10mM Tris with 1mM EDTA for 20 min and allow to cool before testing.

## Description

Perforin is a pore-forming protein that leads to osmotic lysis of the target cells and subsequently enables granzymes to enter the target cells and activate apoptosis. Perforin has structural and functional similarities to complement component 9 (C9). Like C9, this protein creates transmembrane tubules and is capable of lysing non-specifically a variety of target cells. It is one of the main cytolytic proteins of cytolytic granules, and is known to be a key effector molecule for T-cell- and natural killer-cell-mediated cytotoxicity. Defects in this gene cause familial hemophagocytic lymphohistiocytosis type 2 (HPLH2), a rare and lethal autosomal recessive disorder of early childhood. The expression of perforin is reportedly upregulated in activated CD8+ T-cells, natural killer cells and some CD4+ T-cells.

## Application Notes

Optimal dilution of the PRF1 antibody should be determined by the researcher.

## Immunogen

A portion of amino acids 413-552 was used as the immunogen for the PRF1 antibody.

## Storage

Aliquot the PRF1 antibody and store frozen at -20°C or colder. Avoid repeated freeze-thaw cycles.