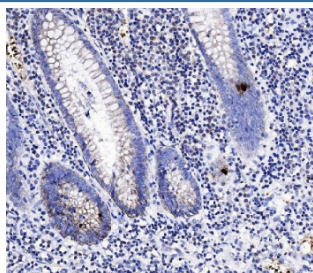


Peptide YY Antibody / PYY (RQ4658)

Catalog No.	Formulation	Size
RQ4658	0.5mg/ml if reconstituted with 0.2ml sterile DI water	100 ug

Bulk quote request

Availability	1-3 business days
Species Reactivity	Human
Format	Antigen affinity purified
Clonality	Polyclonal (rabbit origin)
Isotype	Rabbit IgG
Purity	Antigen affinity purified
Buffer	Lyophilized from 1X PBS with 2% Trehalose
UniProt	P10082
Localization	Secreted
Applications	IHC (FFPE) : 1-2ug/ml
Limitations	This PYY antibody is available for research use only.



IHC staining of FFPE human appendicitis tissue with Peptide YY antibody at 1ug/ml.
 HIER: boil tissue sections in pH6, 10mM citrate buffer, for 10-20 min followed by cooling at RT for 20 min.

Description

Peptide YY (PYY), also known as peptide tyrosine tyrosine, is a peptide that in humans is encoded by the PYY gene. This gene encodes a member of the neuropeptide Y (NPY) family of peptides. The encoded preproprotein is proteolytically processed to generate two alternative peptide products that differ in length by three amino acids. These peptides, secreted by endocrine cells in the gut, exhibit different binding affinities for each of the neuropeptide Y receptors. Binding of the encoded peptides to these receptors mediates regulation of pancreatic secretion, gut mobility and energy homeostasis. Rare variations in this gene could increase susceptibility to obesity and elevated serum levels of the encoded peptides may be associated with anorexia nervosa.

Application Notes

Optimal dilution of the Peptide YY antibody should be determined by the researcher.

Immunogen

Amino acids YPIKPEAPREDASPEELNRYYYASLRHYLNLVTRQRY were used as the immunogen for the Peptide YY antibody.

Storage

After reconstitution, the Peptide YY antibody can be stored for up to one month at 4oC. For long-term, aliquot and store at -20oC. Avoid repeated freezing and thawing.