

Peptide YY Antibody / PYY (F54814)

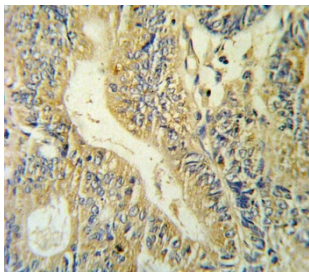
Catalog No.	Formulation	Size
F54814-0.4ML	In 1X PBS, pH 7.4, with 0.09% sodium azide	0.4 ml
F54814-0.08ML	In 1X PBS, pH 7.4, with 0.09% sodium azide	0.08 ml

[Bulk quote request](#)

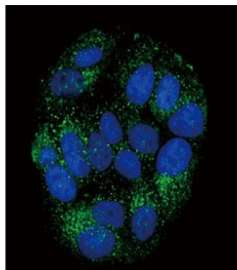
Availability	1-3 business days
Species Reactivity	Human
Format	Purified
Host	Rabbit
Clonality	Polyclonal (rabbit origin)
Isotype	Rabbit Ig
Purity	Antigen affinity purified
UniProt	P10082
Applications	Flow Cytometry : 1:10-1:50 (1x10 ⁶ cells) Immunofluorescence : 1:10-1:50 Immunohistochemistry (FFPE) : 1:10-1:50 Western Blot : 1:500-1:1000
Limitations	This Peptide YY antibody is available for research use only.



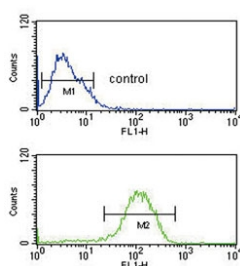
Western blot testing of human MCF7 cell lysate with Peptide YY antibody. Expected molecular weight: 11/4 kDa (preproprotein/mature).



IHC testing of FFPE human colon carcinoma tissue with Peptide YY antibody. HIER: steam section in pH6 citrate buffer for 20 min and allow to cool prior to staining.



Immunofluorescent staining of human MCF7 cells with Peptide YY antibody (green) and DAPI nuclear stain (blue).



Flow cytometry testing of human MCF7 cells with Peptide YY antibody; Blue=isotype control, Green= Peptide YY antibody.

Description

PYY gut peptide inhibits exocrine pancreatic secretion, has a vasoconstrictory action and inhibits jejunal and colonic mobility.

Application Notes

The stated application concentrations are suggested starting points. Titration of the Peptide YY antibody may be required due to differences in protocols and secondary/substrate sensitivity.

Immunogen

A portion of amino acids 67-94 from the human protein was used as the immunogen for the Peptide YY antibody.

Storage

Aliquot the Peptide YY antibody and store frozen at -20°C or colder. Avoid repeated freeze-thaw cycles.