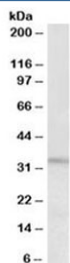


## Peptidase inhibitor 15 Antibody (R35786)

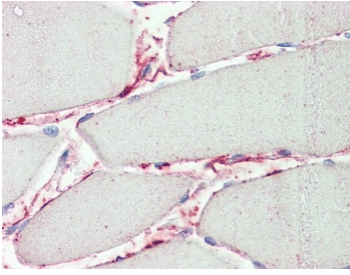
| Catalog No.  | Formulation   | Size   |
|--------------|---|--------|
| R35786-100UG | 0.5 mg/ml in 1X TBS, pH7.3, with 0.5% BSA (US sourced) and 0.02% sodium azide | 100 ug |

[Bulk quote request](#)

|                           |  |
|---------------------------|--|
| <b>Availability</b>       | 1-3 business days  |
| <b>Species Reactivity</b> | Human  |
| <b>Format</b>             | Antigen affinity purified  |
| <b>Host</b>               | Goat   |
| <b>Clonality</b>          | Polyclonal (goat origin)   |
| <b>Isotype</b>            | Goat Ig  |
| <b>Purity</b>             | Antigen affinity   |
| <b>Gene ID</b>            | 51050  |
| <b>Localization</b>       | Secreted   |
| <b>Applications</b>       | Western Blot : 0.3-1ug/ml<br>IHC (FFPE) : 5ug/ml<br>ELISA (peptide) LOD : 1:1000 |
| <b>Limitations</b>        | This Peptidase inhibitor 15 antibody is available for research use only.         |



Western blot testing of HeLa lysate with Peptidase inhibitor 15 antibody at 0.3ug/ml.  
Predicted molecular weight: ~29 kDa.



IHC testing of FFPE human skeletal muscle tissue with Peptidase inhibitor 15 antibody at 5ug/ml. Required HIER: steamed antigen retrieval with pH6 citrate buffer; AP-staining.

## Description

Additional name(s) for this target protein: PI15, CRISP8, cysteine-rich secretory protein 8

## Application Notes

Optimal dilution of the Peptidase inhibitor 15 antibody should be determined by the researcher.

## Immunogen

Amino acids RTGRYRSILQLVKP were used as the immunogen for this Peptidase inhibitor 15 antibody.

## Storage

Aliquot and store the Peptidase inhibitor 15 antibody at -20oC.