

PEPCK2 Antibody / PCK2 (F54964)

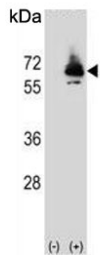
Catalog No.	Formulation	Size
F54964-0.4ML	In 1X PBS, pH 7.4, with 0.09% sodium azide	0.4 ml
F54964-0.08ML	In 1X PBS, pH 7.4, with 0.09% sodium azide	0.08 ml

[Bulk quote request](#)

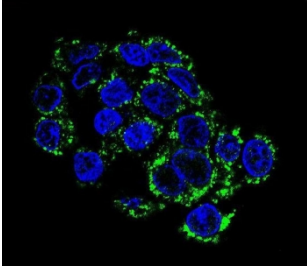
Availability	1-3 business days
Species Reactivity	Human
Format	Purified
Host	Rabbit
Clonality	Polyclonal (rabbit origin)
Isotype	Rabbit Ig
Purity	Antigen affinity purified
UniProt	Q16822
Localization	Cytoplasmic
Applications	Immunofluorescence : 1:10-1:50 Western Blot : 1:500-1:1000 Immunohistochemistry (FFPE) : 1:50-1:100
Limitations	This PEPCK2 antibody is available for research use only.



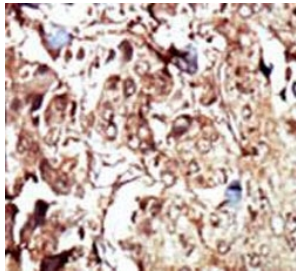
Western blot testing of human HepG2 cell lysate with PEPCK2 antibody. Predicted molecular weight ~71 kDa.



Western blot testing of 1) non-transfected and 2) transfected 293 cell lysate with PEPCK2 antibody.



Immunofluorescent staining of human HepG2 cells with PEPCK2 antibody (green) and DAPI nuclear stain (blue).



IHC testing of FFPE human breast cancer tissue with PEPCK2 antibody. HIER: steam section in pH6 citrate buffer for 20 min and allow to cool prior to staining.

Description

This gene encodes a member of the phosphoenolpyruvate carboxykinase (GTP) family. The protein is a mitochondrial enzyme that catalyzes the conversion of oxaloacetate to phosphoenolpyruvate in the presence of GTP. A cytosolic form encoded by a different gene has also been characterized and is the key enzyme of gluconeogenesis in the liver. The encoded protein may serve a similar function, although it is constitutively expressed and not modulated by hormones such as glucagon and insulin that regulate the cytosolic form. Alternatively spliced transcript variants have been described.

Application Notes

The stated application concentrations are suggested starting points. Titration of the PEPCK2 antibody may be required due to differences in protocols and secondary/substrate sensitivity.

Immunogen

A portion of amino acids 24-54 from the human protein was used as the immunogen for the PEPCK2 antibody.

Storage

Aliquot the PEPCK2 antibody and store frozen at -20oC or colder. Avoid repeated freeze-thaw cycles.

