

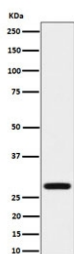
## Peflin Antibody / PEF1 [clone 29P12] (RQ8746)

Catalog No.	Formulation	Size
RQ8746	Antibody in PBS with 0.02% sodium azide, 50% glycerol and 0.4-0.5mg/ml BSA	100 ul

Recombinant **RABBIT MONOCLONAL**

[Bulk quote request](#)

Availability	1-3 days
Species Reactivity	Human
Format	Purified
Clonality	Recombinant Rabbit Monoclonal
Isotype	Rabbit IgG
Clone Name	29P12
Purity	Affinity chromatography
UniProt	Q9UBV8
Localization	Cytoplasm, Nucleus
Applications	Western Blot : 1:500-1:2000
Limitations	This Peflin antibody is available for research use only.



Western blot testing of human HeLa cell lysate with Peflin antibody. Predicted molecular weight ~30 kDa.

## Description

Peflin is a calcium-binding protein that acts as an adapter that bridges unrelated proteins or stabilizes weak protein-protein complexes in response to calcium. Together with PDCD6, acts as a calcium-dependent adapter for the BCR (KLHL12) complex, a complex involved in endoplasmic reticulum (ER)-Golgi transport by regulating the size of COPII coats. [UniProt]

## Application Notes

Optimal dilution of the Peflin antibody should be determined by the researcher.

## Immunogen

A synthetic peptide specific to human Peflin protein was used as the immunogen for the Peflin antibody.

## Storage

Store the Peflin antibody at -20oC.