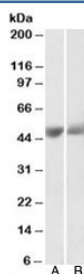


PEDF Antibody / Pigment epithelium-derived factor / SERPINF1 (R34488)

| Catalog No. | Formulation | Size |
|--------------|---|--------|
| R34488-100UG | 0.5 mg/ml in 1X TBS, pH7.3, with 0.5% BSA (US sourced) and 0.02% sodium azide | 100 ug |

[Bulk quote request](#)

| | |
|----------------------|---|
| Availability | 1-3 business days |
| Species Reactivity | Human |
| Predicted Reactivity | Cow, Dog, Pig |
| Format | Antigen affinity purified |
| Host | Goat |
| Clonality | Polyclonal (goat origin) |
| Isotype | Goat Ig |
| Purity | Antigen affinity |
| Gene ID | 5176 |
| Applications | Western Blot : 0.3-1ug/ml ELISA (peptide) LOD : 1:128000 |
| Limitations | This PEDF antibody is available for research use only. |



Western blot testing of human albumin-depleted plasma [A] and serum [B] lysates with PEDF antibody at 0.3ug/ml. Predicted molecular weight: ~46kDa.

Description

Additional name(s) for this target protein: Pigment epithelium-derived factor; SERPINF1

Application Notes

Optimal dilution of the PEDF antibody should be determined by the researcher.

Immunogen

Amino acids KITGKPIKLTQVEHR were used as the immunogen for this PEDF antibody.

Storage

Aliquot and store the PEDF antibody at -20oC.