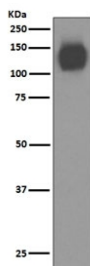


PECAM1 Antibody / CD31 [clone CEE-16] (RQ5479)

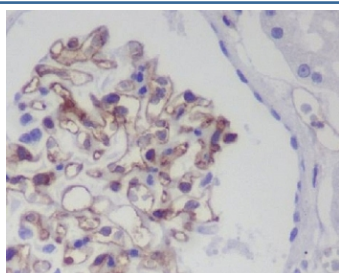
Catalog No.	Formulation	Size
RQ5479	Antibody in PBS with 0.02% sodium azide, 50% glycerol and 0.4-0.5mg/ml BSA	100 ul

[Bulk quote request](#)

Availability	1-2 weeks
Species Reactivity	Human
Format	Purified
Clonality	Rabbit Monoclonal
Isotype	Rabbit IgG
Clone Name	CEE-16
Purity	Affinity purified
UniProt	P16284
Localization	Cell surface, cytoplasmic
Applications	Western Blot : 1:500-1:2000 Immunohistochemistry (FFPE) : 1:50-1:200
Limitations	This PECAM1 antibody is available for research use only.



Western blot testing of human ThP-1 cell lysate with PECAM1 antibody. Expected molecular weight: 83-130 kDa depending on level of glycosylation.



IHC staining of FFPE human kidney tissue with PECAM1 antibody. HIER: boil tissue sections in pH6, 10mM citrate buffer, for 10-20 min and allow to cool before testing.

Description

The protein encoded by the PECAM1 gene is found on the surface of platelets, monocytes, neutrophils, and some types of T-cells, and makes up a large portion of endothelial cell intercellular junctions. The encoded protein is a member of the immunoglobulin superfamily and is likely involved in leukocyte migration, angiogenesis, and integrin activation. [RefSeq]

Application Notes

Optimal dilution of the PECAM1 antibody should be determined by the researcher.

Immunogen

A synthetic peptide specific to human CD31 / PECAM1 was used as the immunogen for the PECAM1 antibody.

Storage

Store the PECAM1 antibody at -20oC.