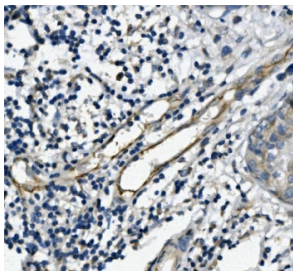


## PECAM1 Antibody / CD31 [clone 2D4] (RQ5938)

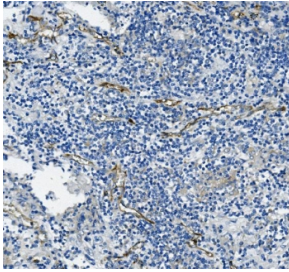
Catalog No.	Formulation	Size
RQ5938	0.5mg/ml if reconstituted with 0.2ml sterile DI water	100 ug

[Bulk quote request](#)

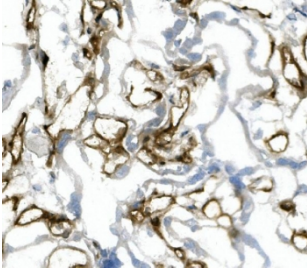
<b>Availability</b>	1-3 business days
<b>Species Reactivity</b>	Human
<b>Format</b>	Antigen affinity purified
<b>Host</b>	Mouse
<b>Clonality</b>	Monoclonal (mouse origin)
<b>Isotype</b>	Mouse IgG2b
<b>Clone Name</b>	2D4
<b>Purity</b>	Affinity purified
<b>Buffer</b>	Lyophilized from 1X PBS with 2% Trehalose and 0.025% sodium azide
<b>UniProt</b>	P16284
<b>Localization</b>	Cell surface, cytoplasmic
<b>Applications</b>	Western Blot : 0.5-1ug/ml Immunohistochemistry (FFPE & Frozen) : 1-2ug/ml
<b>Limitations</b>	This PECAM1 antibody is available for research use only.



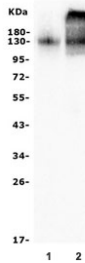
IHC staining of FFPE human breast cancer with PECAM1 antibody. HIER: boil tissue sections in pH8 EDTA for 20 min and allow to cool before testing.



IHC staining of FFPE human lung cancer with PECAM1 antibody. HIER: boil tissue sections in pH8 EDTA for 20 min and allow to cool before testing.



IHC staining of frozen human placenta with PECAM1 antibody.



Western blot testing of human 1) Jurkat and 2) placenta lysate with PECAM1 antibody. Expected molecular weight: 83-130 kDa depending on level of glycosylation.

## Description

CD31 also known as Platelet endothelial cell adhesion molecule (PECAM-1), is a protein that in human is encoded by the PECAM1 gene. Encoded protein is a member of the immunoglobulin superfamily, CD31 is mapped to 17q23.3. CD31 is found on the surface of platelets, monocytes, neutrophils, and some types of T-cells, and makes up a large portion of endothelial cell intercellular junctions. It is demonstrated that CD31 expression on human PBSCs may positively affect both neutrophil and platelet engraftment. Meanwhile, CD31 is involved in leukocyte migration and angiogenesis, which are key components of venous thrombus resolution.

## Application Notes

Optimal dilution of the PECAM1 antibody should be determined by the researcher.

## Immunogen

Recombinant human protein (amino acids Q28-G382) was used as the immunogen for the PECAM1 antibody.

## Storage

After reconstitution, the PECAM1 antibody can be stored for up to one month at 4°C. For long-term, aliquot and store at -20°C. Avoid repeated freezing and thawing.

