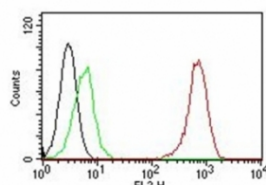


PECAM Antibody PE Conjugate [clone SPM122] (V2780PE)

Catalog No.	Formulation	Size
V2780PE-100T	500 ul at 0.1 mg/ml with 0.1 mg/ml BSA (US sourced), 0.05% sodium azide	100 Tests

Bulk quote request

Availability	1-3 business days
Species Reactivity	Human
Format	PE Conjugate
Host	Mouse
Clonality	Monoclonal (mouse origin)
Isotype	Mouse IgG1, kappa
Clone Name	SPM122
Purity	Protein G affinity chromatography
UniProt	P16284
Localization	Cell surface and cytoplasm of endothelial cells
Applications	Flow Cytometry : 5ul per test per one million cells in 0.1ml
Limitations	This PECAM antibody is available for research use only.



Flow Cytometry testing of Jurkat cells. Black: cells alone; Green: isotype control; Red: PE-labeled PECAM antibody (SPM122).

Description

CD31 (PECAM-1) is a transmembrane glycoprotein member of the immunoglobulin supergene family of adhesion molecules. CD31 is expressed by stem cells of the hematopoietic system and is primarily used to identify and concentrate these cells for experimental studies as well as for bone marrow transplantation. Anti-CD31 has shown to be highly specific and sensitive for vascular endothelial cells. Staining of nonvascular tumors (excluding hematopoietic neoplasms) is rare. CD31 mAb reacts with normal, benign, and malignant endothelial cells which make up blood vessel lining. The

level of CD31 expression can help to determine the degree of tumor angiogenesis, and a high level of CD31 expression may imply a rapidly growing tumor and potentially a predictor of tumor recurrence.

Application Notes

Optimal dilution of the PECAM antibody should be determined by the researcher.

Immunogen

Membrane preparation of a spleen from a patient with hairy cell leukemia was used as the immunogen for the PECAM antibody.

Storage

Store the PECAM antibody at 2-8°C. Conjugate is light sensitive, store in the dark.