

PECAM Antibody [clone 1A10] (V2781S)

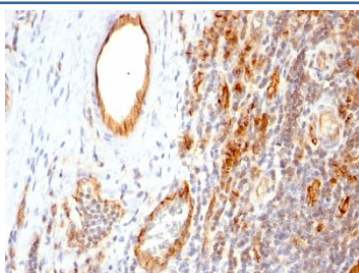
Catalog No.	Formulation	Size
V2781S-0.5ML	Bioreactor concentrate with 0.05% sodium azide	0.5 ml
V2781S-0.1ML	Bioreactor concentrate with 0.05% sodium azide	0.1 ml
V2781IHC-7ML	Prediluted in 1X PBS, 0.05% sodium azide; *For IHC use only*	7 ml



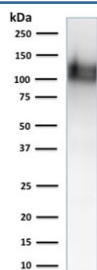
Citations (11)

[Bulk quote request](#)

Availability	1-3 business days
Species Reactivity	Human
Format	Bioreactor concentrate
Clonality	Monoclonal (mouse origin)
Isotype	Mouse IgG1, kappa
Clone Name	1A10
Purity	Unpurified high titer supernatant
UniProt	P16284
Localization	Cell surface and cytoplasm of endothelial cells
Applications	Western Blot : 1-2ug/ml Immunohistochemistry (FFPE) : 1:50-1:100 for 30 min at RT
Limitations	This PECAM antibody is available for research use only.



IHC: Formalin-fixed, paraffin-embedded human tonsil stained with PECAM antibody (1A10)



Western blot testing of human ThP1 cell lysate with CD31 antibody (clone 1A10).
Predicted size: 83-130 kDa depending on level of glycosylation.

Description

CD31 (PECAM-1) is a transmembrane glycoprotein member of the immunoglobulin supergene family of adhesion molecules. CD31 is expressed by stem cells of the hematopoietic system and is primarily used to identify and concentrate these cells for experimental studies as well as for bone marrow transplantation. Anti-CD31 has shown to be highly specific and sensitive for vascular endothelial cells. Staining of nonvascular tumors (excluding hematopoietic neoplasms) is rare. CD31 mAb reacts with normal, benign, and malignant endothelial cells which make up blood vessel lining. The level of CD31 expression can help to determine the degree of tumor angiogenesis, and a high level of CD31 expression may imply a rapidly growing tumor and potentially a predictor of tumor recurrence.

Application Notes

Optimal dilution of the PECAM antibody should be determined by the researcher.

1. Staining of formalin-fixed tissues requires boiling tissue sections in 10mM Tris with 1mM EDTA, pH 9.0, for 10-20 min followed by cooling at RT for 20 min
2. The prediluted format is supplied in a dropper bottle and is optimized for use in IHC. After epitope retrieval step (if required), drip mAb solution onto the tissue section and incubate at RT for 30 min.

Immunogen

Prokaryotic recombinant fusion protein corresponding to a portion of the extracellular domain downstream of the signal sequence of CD31/PECAM was used as the immunogen for the PECAM antibody.

Storage

Store the PECAM antibody at 2-8°C (with azide) or aliquot and store at -20°C or colder (without azide).