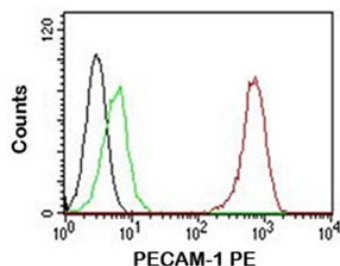


## PECAM-1 Antibody PE Conjugate [clone C31.7] (V2219PE)

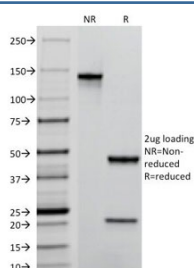
Catalog No.	Formulation	Size
V2219PE-100T	500 ul at 0.1 mg/ml with 0.1 mg/ml BSA (US sourced), 0.05% sodium azide	100 Tests

**Bulk quote request**

Availability	1-3 business days
Species Reactivity	Human
Format	PE Conjugate
Clonality	Monoclonal (mouse origin)
Isotype	Mouse IgG1, kappa
Clone Name	C31.7
Purity	Protein G affinity chromatography
Buffer	1X PBS, pH 7.4
Gene ID	5175 (Human)
Localization	Cell surface and cytoplasmic
Applications	Flow Cytometry : 5ul/test/million cells or 5ul/100ul of whole blood
Limitations	This <b>PECAM-1 antibody</b> is available for research use only.



FACS testing of Jurkat cells: Black=cells alone; Green=isotype control; Red= PE conjugated PECAM-1 antibody (clone C31.7)



SDS-PAGE Analysis of Purified, Unconjugated, BSA-Free PECAM-1 Antibody (clone C31.7). Confirmation of Integrity and Purity of the Antibody.

## Description

PECAM-1, or platelet endothelial cell adhesion molecule-1, also called CD31, is made up of six extracellular immunoglobulin-like domains, a single transmembrane domain, and a cytoplasmic domain containing serine and tyrosine residues that when phosphorylated, activate the molecules signaling function. It is expressed on platelets, monocytes, neutrophils, bone marrow macrophage and dendritic cells precursors, and at the intracellular junction of endothelial cells. PECAM-1, on the endothelial lining of blood vessels, helps maintain the vascular barrier. In response to inflammatory mediators, the endothelial pull away from each other allowing fluid, inflammatory cells and proteins into the extravascular space. The inflammatory response fades as adhesion of neighboring cells increase. PECAM-1 also plays an important role in angiogenesis, promoting endothelial cell motility, junctional development and capillary morphogenesis.

## Application Notes

The concentration stated for each application is a general starting point. Variations in protocols, secondaries and substrates may require the PECAM-1 antibody to be titrated up or down for optimal performance.

## Immunogen

Human recombinant PECAM-1 / CD31 protein was used as the immunogen for this antibody.

## Storage

Store the PECAM-1 antibody at 2-8°C. Conjugate is light sensitive, store in the dark.

## Alternate Names

EndoCAM; PECA1; Platelet Endothelial Cell Adhesion Molecule 1; GPIIA, PECAM-1, CD31 antibody