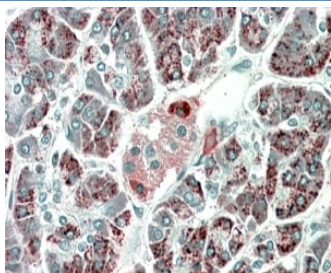


PEBP4 Antibody (R35600)

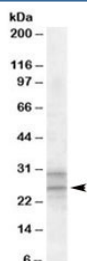
Catalog No.	Formulation	Size
R35600-100UG	0.5 mg/ml in 1X TBS, pH7.3, with 0.5% BSA (US sourced) and 0.02% sodium azide	100 ug

[Bulk quote request](#)

Availability	1-3 business days
Species Reactivity	Human
Format	Antigen affinity purified
Clonality	Polyclonal (goat origin)
Isotype	Goat Ig
Purity	Antigen affinity
Gene ID	157310
Applications	Western Blot : 1-3ug/ml Immunohistochemistry (FFPE) : 5-10ug/ml ELISA (peptide) LOD : 1:4000
Limitations	This PEBP4 antibody is available for research use only.



IHC staining of FFPE human pancreas with PEBP4 antibody at 5ug/ml. HIER: microwaved with pH9 Tris/EDTA buffer, HRP-staining.



Western blot testing of human heart lysate with PEBP4 antibody at 1ug/ml. Both the expected ~26kDa band and the additional ~30kDa band are blocked by the immunizing peptide.

Description

Additional name(s) for this target protein: Phosphatidylethanolamine-binding protein 4, Cousin-of-RKIP 1, CORK1

Application Notes

Optimal dilution of the PEBP4 antibody should be determined by the researcher.

Immunogen

Amino acids RERASEPKHKNQAE were used as the immunogen for this PEBP4 antibody.

Storage

Aliquot and store the PEBP4 antibody at -20oC.