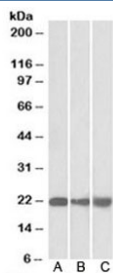


PEBP1 Antibody / PBP / RKIP (R33691)

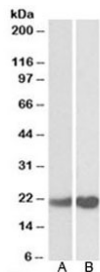
Catalog No.	Formulation	Size
R33691-100UG	0.5 mg/ml in 1X TBS, pH7.3, with 0.5% BSA (US sourced) and 0.02% sodium azide	100 ug

[Bulk quote request](#)

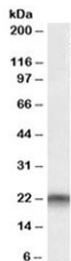
Availability	1-3 business days
Species Reactivity	Human, Mouse
Predicted Reactivity	Cow, Dog, Rat
Format	Antigen affinity purified
Host	Goat
Clonality	Polyclonal (goat origin)
Isotype	Goat Ig
Purity	Antigen affinity
Gene ID	5037
Localization	Cytoplasmic
Applications	Western Blot : 0.01-0.03ug/ml Immunohistochemistry (FFPE) : 1-5ug/ml ELISA (peptide) LOD : 1:16000
Limitations	This PEBP1 antibody is available for research use only.



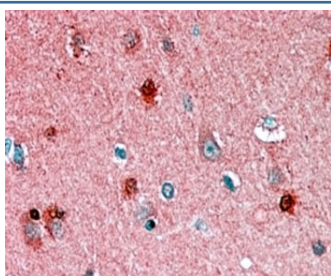
Western blot of mouse NIH3T3 (A), and human HEK293 (B) and HepG2 (C) lysate with PEBP1 antibody at 0.01ug/ml. Predicted molecular weight: ~21 kDa.



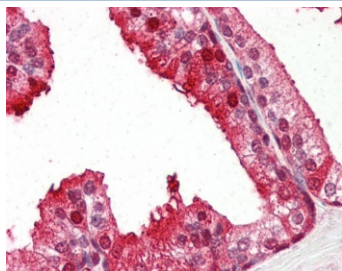
Western blot of human cerebellum (A) and mouse testis (B) lysate with PEBP1 antibody at 0.01ug/ml. Predicted molecular weight: ~21 kDa.



Western blot testing of A549 lysate with PEBP1 antibody at 0.01ug/ml. Predicted molecular weight: ~21 kDa.



IHC staining of FFPE human cortex with PEBP1 antibody at 1.5ug/ml. HIER: steamed with pH6 citrate buffer, AP-staining.



IHC staining of FFPE human prostate tissue with PEBP1 antibody at 5ug/ml. HIER: steamed with pH6 citrate buffer, AP-staining.

Description

Additional name(s) for this target protein: Phosphatidylethanolamine binding protein 1

Application Notes

Optimal dilution of the PEBP1 antibody should be determined by the researcher.

Immunogen

Amino acids DYVPKLYEQLSGK were used as the immunogen for this PEBP1 antibody.

Storage

Aliquot and store the PEBP1 antibody at -20oC.

