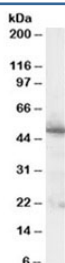


## PDX1 Antibody / Pyruvate dehydrogenase protein X / PDXH (R34643)

Catalog No.	Formulation	Size
R34643-100UG	0.5 mg/ml in 1X TBS, pH7.3, with 0.5% BSA (US sourced) and 0.02% sodium azide	100 ug

[Bulk quote request](#)

Availability	1-3 business days
Species Reactivity	Human
Predicted Reactivity	Dog, Mouse, Rat
Format	Antigen affinity purified
Host	Goat
Clonality	Polyclonal (goat origin)
Isotype	Goat Ig
Purity	Antigen affinity
Gene ID	8050
Applications	Western Blot : 1-3ug/ml Immunohistochemistry (FFPE) : 2-4ug/ml ELISA (peptide) LOD : 1:32000
Limitations	This PDX1 antibody is available for research use only.



Western blot testing of human pancreas lysate with PDX1 antibody at 1ug/ml. Predicted molecular weight ~54kDa.

### Description

Additional name(s) for this target protein: Pyruvate dehydrogenase complex, component X; PDHX

### Application Notes

Optimal dilution of the PDX1 antibody should be determined by the researcher.

## **Immunogen**

Amino acids KSFKANLENPIRLA were used as the immunogen for this PDX1 antibody.

## **Storage**

Aliquot and store the PDX1 antibody at -20oC.