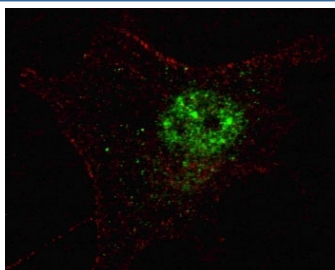


PDX1 Antibody / Pyruvate dehydrogenase protein X / PDXH (F47892)

Catalog No.	Formulation	Size
F47892-0.4ML	In 1X PBS, pH 7.4, with 0.09% sodium azide	0.4 ml
F47892-0.08ML	In 1X PBS, pH 7.4, with 0.09% sodium azide	0.08 ml

[Bulk quote request](#)

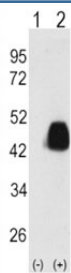
Availability	1-3 business days
Species Reactivity	Human
Predicted Reactivity	Mouse, Rat
Format	Antigen affinity purified
Clonality	Polyclonal (rabbit origin)
Isotype	Rabbit Ig
Purity	Antigen affinity
UniProt	O00330
Applications	Immunofluorescence : 1:100 Western Blot : 1:1000 IHC (Paraffin) : 1:10-1:50
Limitations	This PDX1 antibody is available for research use only.



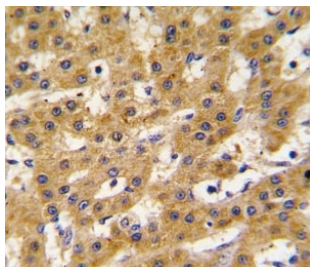
Fluorescent confocal image of SY5Y cells stained with PDX1 antibody. Alexa Fluor 488 conjugated secondary (green) was used. Nuclei were counterstained with Hoechst 33342 (blue) (10 ug/ml, 5 min). Note the highly specific localization of the PDX1 immunosignal to the nucleus.



Western blot analysis of PDX1 antibody and NCI-H460 lysate. Predicted molecular weight ~54kDa.



Western blot analysis of PDX1 antibody and 293 cell lysate either nontransfected (Lane 1) or transiently transfected with the PDX1 gene (2).



IHC analysis of FFPE human hepatocarcinoma tissue stained with PDX1 antibody

Description

PDX1/PDHX, located in the mitochondrial matrix, is required for anchoring dihydrolipoamide dehydrogenase (E3) to the dihydrolipoamide transacetylase (E2) core of the pyruvate dehydrogenase complexes of eukaryotes. This specific binding is essential for a functional PDH complex. Eukaryotic pyruvate dehydrogenase complexes are organized about a core consisting of the oligomeric dihydrolipoamide acetyl-transferase, around which are arranged multiple copies of pyruvate dehydrogenase, dihydrolipoamide dehydrogenase and protein X bound by noncovalent bonds. Defects in PDHX are a cause of lacticacidemia. PDX1 belongs to the 2-oxoacid dehydrogenase family and contains 1 lipoyl-binding domain.

Application Notes

Titration of the PDX1 antibody may be required due to differences in protocols and secondary/substrate sensitivity.

Immunogen

A portion of amino acids 1-30 from the human protein was used as the immunogen for this PDX1 antibody.

Storage

Aliquot the PDX1 antibody and store frozen at -20oC or colder. Avoid repeated freeze-thaw cycles.