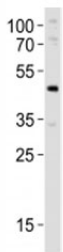


## Pdx1 Antibody / Pancreas/duodenum homeobox protein 1 (F53050)

Catalog No.	Formulation	Size
F53050-0.4ML	In 1X PBS, pH 7.4, with 0.09% sodium azide	0.4 ml
F53050-0.08ML	In 1X PBS, pH 7.4, with 0.09% sodium azide	0.08 ml

### Bulk quote request

<b>Availability</b>	1-3 business days
<b>Species Reactivity</b>	Mouse
<b>Format</b>	Antigen affinity purified
<b>Host</b>	Rabbit
<b>Clonality</b>	Polyclonal (rabbit origin)
<b>Isotype</b>	Rabbit Ig
<b>Purity</b>	Antigen affinity
<b>UniProt</b>	P52946
<b>Applications</b>	Western Blot : 1:1000
<b>Limitations</b>	This Pdx1 antibody is available for research use only.



Western blot analysis of lysate from mouse pancreas tissue lysate using Pdx1 antibody at 1:1000. Observed molecular weight 31/40~46kDa (unmodified/modified).

## Description

Activates insulin and somatostatin gene transcription. Key regulator of islet peptide hormone expression but also responsible for the development of the pancreas, most probably by determining maturation and differentiation of common pancreatic precursor cells in the developing gut. As part of a PDX1:PBX1b:MEIS2b complex in pancreatic acinar cells is involved in the transcriptional activation of the ELA1 enhancer; the complex binds to the enhancer B element and cooperates with the transcription factor 1 complex (PTF1) bound to the enhancer A element. Binds the DNA sequence 5'-CC[CT]TAATGGG-3'.

## Application Notes

Titration of the Pdx1 antibody may be required due to differences in protocols and secondary/substrate sensitivity.

## Immunogen

This mouse Pdx1 antibody was produced from a rabbit immunized with a KLH conjugated synthetic peptide between 136-169 amino acids from the Central region of mouse Pdx1.

## Storage

Aliquot the Pdx1 antibody and store frozen at -20oC or colder. Avoid repeated freeze-thaw cycles.