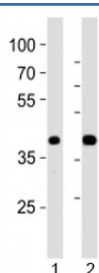


PDX1 Antibody / Pancreas/duodenum homeobox protein 1 (F52924)

Catalog No.	Formulation	Size
F52924-0.4ML	In 1X PBS, pH 7.4, with 0.09% sodium azide	0.4 ml
F52924-0.08ML	In 1X PBS, pH 7.4, with 0.09% sodium azide	0.08 ml

[Bulk quote request](#)

Availability	1-3 business days
Species Reactivity	Mouse, Rat
Format	Antigen affinity purified
Clonality	Polyclonal (rabbit origin)
Isotype	Rabbit Ig
Purity	Antigen affinity
UniProt	P52945
Applications	Western Blot : 1:1000
Limitations	This PDX1 antibody is available for research use only.



Western blot analysis of lysate from 1) mouse pancreas and 2) rat pancreas tissue using PDX1 antibody at 1:1000. Observed molecular weight 31/40~46kDa (unmodified/modified).

Description

Activates insulin, somatostatin, glucokinase, islet amyloid polypeptide and glucose transporter type 2 gene transcription. Particularly involved in glucose-dependent regulation of insulin gene transcription. As part of a PDX1:PBX1b:MEIS2b complex in pancreatic acinar cells is involved in the transcriptional activation of the ELA1 enhancer; the complex binds to the enhancer B element and cooperates with the transcription factor 1 complex (PTF1) bound to the enhancer A element. Binds preferentially the DNA motif 5'-[CT]TAAT[TG]-3'. During development, specifies the early pancreatic epithelium, permitting its proliferation, branching and subsequent differentiation. At adult stage, required for maintaining the hormone-producing phenotype of the beta-cell.

Application Notes

Titration of the PDX1 antibody may be required due to differences in protocols and secondary/substrate sensitivity.

Immunogen

This PDX1 antibody was produced from a rabbit immunized with a KLH conjugated synthetic peptide between 21-55 amino acids from the N-terminal region of human Pancreas/duodenum homeobox protein 1.

Storage

Aliquot the PDX1 antibody and store frozen at -20oC or colder. Avoid repeated freeze-thaw cycles.