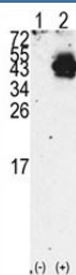


## PDX1 Antibody / Pancreas/duodenum homeobox protein 1 (F50728)

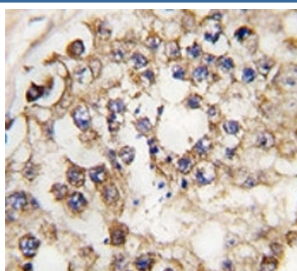
Catalog No.	Formulation	Size
F50728-0.4ML	In 1X PBS, pH 7.4, with 0.09% sodium azide	0.4 ml
F50728-0.08ML	In 1X PBS, pH 7.4, with 0.09% sodium azide	0.08 ml

**Bulk quote request**

<b>Availability</b>	1-3 business days
<b>Species Reactivity</b>	Human
<b>Format</b>	Antigen affinity purified
<b>Clonality</b>	Polyclonal (rabbit origin)
<b>Isotype</b>	Rabbit Ig
<b>Purity</b>	Antigen affinity
<b>UniProt</b>	P52945
<b>Applications</b>	Western Blot : 1:1000 IHC (Paraffin) : 1:10-1:50
<b>Limitations</b>	This PDX1 antibody is available for research use only.



Western blot analysis of PDX1 antibody and 293 cell lysate either nontransfected (Lane 1) or transiently transfected with the PDX1 gene (2). Observed molecular weight 31/40~46kDa (unmodified/modified).



IHC analysis of FFPE human testis tissue stained with PDX1 antibody

## Description

PDX1 is a transcriptional activator of several genes, including insulin, somatostatin, glucokinase, islet amyloid polypeptide, and glucose transporter type 2. This nuclear protein is involved in the early development of the pancreas and plays a major role in glucose-dependent regulation of insulin gene expression. Defects in the gene encoding PDX1 are a cause of pancreatic agenesis, which can lead to early-onset insulin-dependent diabetes mellitus (NIDDM), as well as maturity onset diabetes of the young type 4 (MODY4).

## Application Notes

Titration of the PDX1 antibody may be required due to differences in protocols and secondary/substrate sensitivity.

## Immunogen

A portion of amino acids 40-69 from the human protein was used as the immunogen for this PDX1 antibody.

## Storage

Aliquot the PDX1 antibody and store frozen at -20oC or colder. Avoid repeated freeze-thaw cycles.