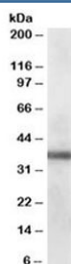


## PDLIM1 Antibody (R36243)

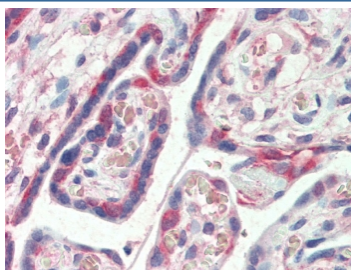
Catalog No.	Formulation	Size
R36243-100UG	0.5 mg/ml in 1X TBS, pH7.3, with 0.5% BSA (US sourced) and 0.02% sodium azide	100 ug

[Bulk quote request](#)

Availability	1-3 business days
Species Reactivity	Human
Format	Antigen affinity purified
Clonality	Polyclonal (goat origin)
Isotype	Goat Ig
Purity	Antigen affinity
Gene ID	9124
Applications	Western Blot : 0.1-0.3ug/ml IHC (FFPE) : 5ug/ml ELISA (peptide) LOD : 1:64000
Limitations	This PDLIM1 antibody is available for research use only.



Western blot testing of human lung lysate with PDLIM1 antibody at 0.1ug/ml. Predicted molecular weight: ~36 kDa.



IHC testing of FFPE human placental tissue with PDLIM1 antibody at 0.5ug/ml. Steamed antigen retrieval with citrate buffer pH 6, AP-staining.

## Description

Additional name(s) for this target protein: PDZ and LIM domain 1; carboxy terminal LIM domain protein 1 (CLIM1)

## Application Notes

Optimal dilution of the PDLIM1 antibody should be determined by the researcher.

## Immunogen

Amino acids TPPEGYEVVTVFPK were used as the immunogen for this PDLIM1 antibody.

## Storage

Aliquot and store the PDLIM1 antibody at -20oC.