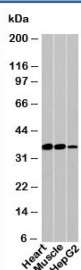


## PDLIM1 Antibody (N1181)

Catalog No.	Formulation	Size
N1181-100UG	0.5 mg/ml in 1X PBS with 0.1 mg/ml BSA (US sourced), 0.05% sodium azide	100 ug
N1181-25UG	0.5 mg/ml in 1X PBS with 0.1 mg/ml BSA (US sourced), 0.05% sodium azide	25 ug

[Bulk quote request](#)

Species Reactivity	Human
Format	Purified
Clonality	Polyclonal (rabbit origin)
Isotype	Rabbit IgG
Purity	Protein A affinity chromatography
Buffer	1X PBS, pH 7.4
Gene ID	9124
Applications	Western Blot : 1-3ug/ml
Limitations	This <b>PDLIM1 antibody</b> is available for research use only.



Western blot testing of human samples with PDLIM1 antibody at 1ug/ml.

## Description

PDLIM1 (PDZ And LIM Domain 1) is a member of the protein family Enigma and named for its amino terminal PDZ domain and carboxy terminal LIM domains. In breast cancer cells, PDLIM1 interacts with alpha actin 1 and 4, and is an important regulator of breast cancer cell migration and metastasis, but not proliferation. PDLIM1 is widely expressed, with high expression seen in muscle and heart, low expression in pancreas, thymus, liver and kidney, and no expression in testis, ovary and brain.

## Application Notes

Provided assay concentrations are suggestions only, antibody titration may be required for optimal results.

## **Immunogen**

A recombinant protein fragment from human PDLIM1 was used as the immunogen for this antibody.

## **Storage**

Aliquot the antibody and store frozen at -20oC or colder. Avoid repeated freeze-thaw cycles.

## **Alternate Names**

PDZ and LIM domain 1, CLIM1 antibody, PDLI1, CLP36