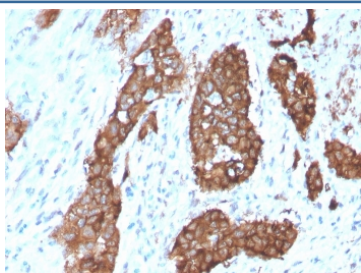


PDLIM1 Antibody [clone CPTC-PDLIM1-1] (V8195)

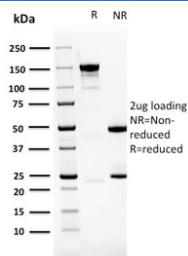
Catalog No.	Formulation	Size
V8195-100UG	0.2 mg/ml in 1X PBS with 0.1 mg/ml BSA (US sourced) and 0.05% sodium azide	100 ug
V8195-20UG	0.2 mg/ml in 1X PBS with 0.1 mg/ml BSA (US sourced) and 0.05% sodium azide	20 ug
V8195SAF-100UG	1 mg/ml in 1X PBS; BSA free, sodium azide free	100 ug

[Bulk quote request](#)

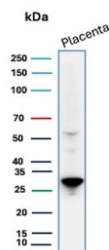
Availability	1-3 business days
Species Reactivity	Human
Format	Purified
Clonality	Monoclonal (mouse origin)
Isotype	Mouse IgG1, kappa
Clone Name	CPTC-PDLIM1-1
Purity	Protein G affinity chromatography
UniProt	O00151
Localization	Cytoplasmic
Applications	Western Blot : 1-2ug/ml Immunohistochemistry (FFPE) : 1-2ug/ml
Limitations	This PDLIM1 antibody is available for research use only.



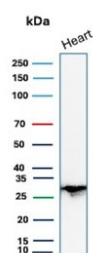
IHC staining of FFPE human breast carcinoma with PDLIM1 antibody (clone CPTC-PDLIM1-1). HIER: boil tissue sections in pH 9 10mM Tris with 1mM EDTA for 20 min and allow to cool before testing.



SDS-PAGE analysis of purified, BSA-free PDLIM1 antibody (clone CPTC-PDLIM1-1) as confirmation of integrity and purity.



Western blot testing of human placental tissue lysate with PDLIM1 antibody. Predicted molecular weight ~36 kDa, observed here at ~28 kDa.



Western blot testing of human heart tissue lysate with PDLIM1 antibody. Predicted molecular weight ~36 kDa, observed here at ~28 kDa.

Description

CLP36, also known as PDLIM1, CLIM1 or Elfin, is a 329 amino acid cytoplasmic protein that associates with actin stress fibers at the cytoskeleton. Expressed at high levels in skeletal muscle and heart and at lower levels in colon, small intestine, spleen, lung, placenta, kidney, liver, thymus and pancreas, CLP36 functions as a cytoskeletal protein that is thought to act as an adaptor, bringing target proteins to the cytoskeleton. Specifically, CLP36 interacts with Clik1 (-actinin-1, thereby facilitating the association of Clik1 with actin stress fibers. CLP36 contains one PDZ domain and one LIM zinc-binding domain through which it conveys its protein-protein binding capabilities. Human CLP36 shares 88% sequence similarity with its rat counterpart, suggesting a conserved function between species.

Application Notes

Optimal dilution of the PDLIM1 antibody should be determined by the researcher.

Immunogen

A recombinant human full-length PDLIM1 protein was used as the immunogen for this PDLIM1 antibody.

Storage

Store the PDLIM1 antibody at 2-8°C (with azide) or aliquot and store at -20°C or colder (without azide).

