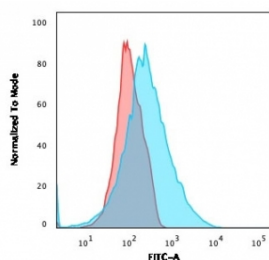


PDL2 Antibody / Programmed death ligand 2 / CD273 [clone PDL2/1850] (V8176)

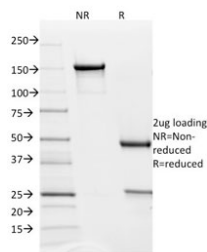
Catalog No.	Formulation	Size
V8176-100UG	0.2 mg/ml in 1X PBS with 0.1 mg/ml BSA (US sourced) and 0.05% sodium azide	100 ug
V8176-20UG	0.2 mg/ml in 1X PBS with 0.1 mg/ml BSA (US sourced) and 0.05% sodium azide	20 ug
V8176SAF-100UG	1 mg/ml in 1X PBS; BSA free, sodium azide free	100 ug

Bulk quote request

Availability	1-3 business days
Species Reactivity	Human
Format	Purified
Clonality	Monoclonal (mouse origin)
Isotype	Mouse IgG1, kappa
Clone Name	PDL2/1850
Purity	Protein G affinity chromatography
UniProt	Q9Q51
Applications	Flow Cytometry : 1-2ug/10 ⁶ cells in 0.1ml
Limitations	This PDL2 antibody is available for research use only.



Flow cytometry testing of human Jurkat cells with PDL2 antibody; Red=isotype control, Blue= PD-L2 antibody.



SDS-PAGE analysis of purified, BSA-free PDL2 antibody as confirmation of integrity and purity.

Description

Recognizes a protein of about 31kDa, which is identified as PD-L2 (same as PDCD1LG2). Engagement of CD28 by B7-1 (CD80) or B7-2 (CD86) in the presence of antigen promotes T cell proliferation, cytokine production, differentiation of effector T cells and the induction of Bcl-x, a promoter of T cell survival. Conversely, engagement of CTLA4 by B7-1 or B7-2 may inhibit proliferation and IL-2 production. PD-L2 does not bind CD28, cytotoxic T lymphocyte A4 or ICOS (inducible co-stimulator). The constitutive expression of PD-L1 and PD-L2 on parenchymal cells of heart, lung and kidney suggests that the Pdc1-Pdcd-L system could provide unique negative signaling to help prevent autoimmune disease.

Application Notes

Optimal dilution of the PDL2 antibody should be determined by the researcher.

Immunogen

A recombinant fragment of human PD-L2 protein within amino acids 27-220 was used as the immunogen for the PDL2 antibody.

Storage

Store the PDL2 antibody at 2-8°C (with azide) or aliquot and store at -20°C or colder (without azide).