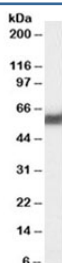


PDlp Antibody / PDIA2 (R34857)

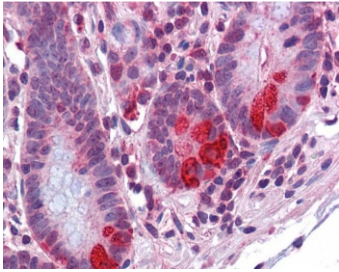
Catalog No.	Formulation	Size
R34857-100UG	0.5 mg/ml in 1X TBS, pH7.3, with 0.5% BSA (US sourced) and 0.02% sodium azide	100 ug

[Bulk quote request](#)

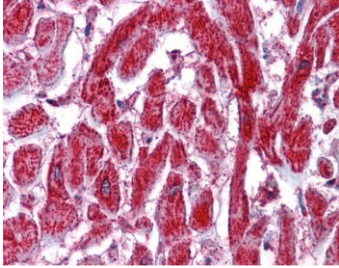
Availability	1-3 business days
Species Reactivity	Human
Predicted Reactivity	Mouse, Rat
Format	Antigen affinity purified
Host	Goat
Clonality	Polyclonal (goat origin)
Isotype	Goat Ig
Purity	Antigen affinity
Gene ID	64714
Applications	Western Blot : 0.01-0.03ug/ml IHC (FFPE) : 3.75ug/ml ELISA (peptide) LOD : 1:64000
Limitations	This PDlp antibody is available for research use only.



Western blot testing of human pancreas lysate with PDlp antibody at 0.03ug/ml.
Predicted molecular weight ~58/70 kDa (unmodified/glycosylated).



IHC testing of FFPE human small intestine tissue with PDIp antibody at 3.75ug/ml. Required HIER: steamed antigen retrieval with pH6 citrate buffer; AP-staining.



IHC testing of FFPE human heart tissue with PDIp antibody at 3.75ug/ml. Required HIER: steamed antigen retrieval with pH6 citrate buffer; AP-staining.

Description

Additional name(s) for this target protein: Pancreatic protein disulfide isomerase, PDIA2, PDIP, PDIR, Protein disulfide-isomerase A2

Application Notes

Optimal dilution of the PDIp antibody should be determined by the researcher.

Immunogen

Amino acids NLETTKKYAPVD were used as the immunogen for this PDIp antibody.

Storage

Aliquot and store the PDIp antibody at -20oC.