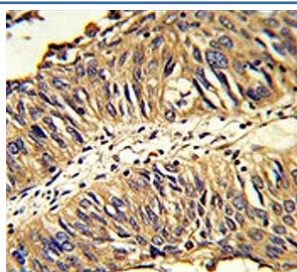


PDIA3 Antibody / Protein disulfide-isomerase A3 / ERp57 (F54795)

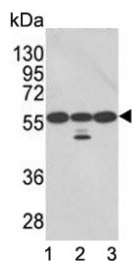
Catalog No.	Formulation	Size
F54795-0.4ML	In 1X PBS, pH 7.4, with 0.09% sodium azide	0.4 ml
F54795-0.08ML	In 1X PBS, pH 7.4, with 0.09% sodium azide	0.08 ml

[Bulk quote request](#)

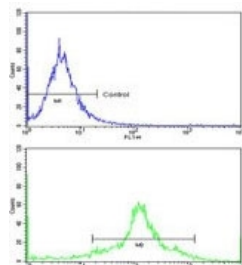
Availability	1-3 business days
Species Reactivity	Human
Format	Purified
Host	Rabbit
Clonality	Polyclonal (rabbit origin)
Isotype	Rabbit Ig
Purity	Purified
UniProt	P30101
Localization	Cytoplasmic
Applications	Flow Cytometry : 1:10-1:50 (1x10 ⁶ cells) Immunohistochemistry (FFPE) : 1:50-1:100 Western Blot : 1:500-1:1000
Limitations	This PDIA3 antibody is available for research use only.



IHC testing of FFPE human lung carcinoma tissue with PDIA3 antibody. HIER: steam section in pH6 citrate buffer for 20 min and allow to cool prior to staining.



Western blot testing of human 1) A2058, 2) A375 and 3) Ramos cell lysate with PDIA3 antibody. Predicted molecular weight ~57 kDa.



Flow cytometry testing of human WiDr cells with PDIA3 antibody; Blue=isotype control, Green= PDIA3 antibody.

Description

PDIA3 is the endoplasmic reticulum that interacts with lectin chaperones calreticulin and calnexin to modulate folding of newly synthesized glycoproteins. The protein was once thought to be a phospholipase; however, it has been demonstrated that the protein actually has protein disulfide isomerase activity. It is thought that complexes of lectins and this protein mediate protein folding by promoting formation of disulfide bonds in their glycoprotein substrates.

Application Notes

The stated application concentrations are suggested starting points. Titration of the PDIA3 antibody may be required due to differences in protocols and secondary/substrate sensitivity.

Immunogen

A portion of amino acids 192-220 from the human protein was used as the immunogen for the PDIA3 antibody.

Storage

Aliquot the PDIA3 antibody and store frozen at -20oC or colder. Avoid repeated freeze-thaw cycles.