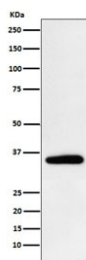


## PDHB Antibody / Pyruvate Dehydrogenase E1 beta subunit [clone AEAD-16] (RQ5355)

Catalog No.	Formulation	Size
RQ5355	Antibody in PBS with 0.02% sodium azide, 50% glycerol and 0.4-0.5mg/ml BSA	100 ul

[Bulk quote request](#)

Availability	1-2 weeks
Species Reactivity	Human, Mouse, Rat
Format	Purified
Clonality	Rabbit Monoclonal
Isotype	Rabbit IgG
Clone Name	AEAD-16
Purity	Affinity purified
UniProt	P11177
Applications	Western Blot : 1:1000-1:5000
Limitations	This PDHB antibody is available for research use only.



Western blot testing of human HeLa cell lysate with PDHB antibody. Predicted molecular weight ~39 kDa.

### Description

The pyruvate dehydrogenase (PDH) complex is a nuclear-encoded mitochondrial multienzyme complex that catalyzes the overall conversion of pyruvate to acetyl-CoA and carbon dioxide, and provides the primary link between glycolysis and the tricarboxylic acid (TCA) cycle. The PDH complex is composed of multiple copies of three enzymatic components: pyruvate dehydrogenase (E1), dihydrolipoamide acetyltransferase (E2) and lipoamide dehydrogenase (E3). The E1 enzyme is a heterotetramer of two alpha and two beta subunits. This gene encodes the E1 beta subunit. Mutations in this gene are associated with pyruvate dehydrogenase E1-beta deficiency. [RefSeq]

## Application Notes

Optimal dilution of the PDHB antibody should be determined by the researcher.

## Immunogen

A synthetic peptide specific to human Pyruvate Dehydrogenase E1 beta subunit / PDHB was used as the immunogen for the PDHB antibody.

## Storage

Store the PDHB antibody at -20oC.