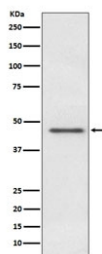


PDHA1 Antibody / Pyruvate Dehydrogenase E1 Alpha [clone AODI-16] (RQ5240)

Catalog No.	Formulation	Size
RQ5240	Antibody in PBS with 0.02% sodium azide, 50% glycerol and 0.4-0.5mg/ml BSA	100 ul

[Bulk quote request](#)

Availability	1-2 weeks
Species Reactivity	Human
Format	Purified
Host	Rabbit
Clonality	Rabbit Monoclonal
Isotype	Rabbit IgG
Clone Name	AODI-16
Purity	Affinity purified
UniProt	P08559
Applications	Western Blot : 1:500-1:2000
Limitations	This PDHA1 antibody is available for research use only.



Western blot testing of human HeLa cell lysate with PDHA1 antibody. Predicted molecular weight ~43 kDa.

Description

The pyruvate dehydrogenase (PDH) complex is a nuclear-encoded mitochondrial multi-enzyme complex that catalyzes the overall conversion of pyruvate to acetyl-CoA and CO₂, and provides the primary link between glycolysis and the tricarboxylic acid (TCA) cycle. The PDH complex is composed of multiple copies of three enzymatic components: pyruvate dehydrogenase (E1), dihydrolipoamide acetyltransferase (E2) and lipoamide dehydrogenase (E3). The E1 enzyme is a heterotetramer of two alpha and two beta subunits. This gene encodes the E1 alpha 1 subunit containing the

E1 active site, and plays a key role in the function of the PDH complex. Mutations in this gene are associated with pyruvate dehydrogenase E1-alpha deficiency and X-linked Leigh syndrome. [RefSeq]

Application Notes

Optimal dilution of the PDHA1 antibody should be determined by the researcher.

Immunogen

A synthetic peptide specific to human Pdh E1 Alpha / PDHA1 was used as the immunogen for the PDHA1 antibody.

Storage

Store the PDHA1 antibody at -20oC.