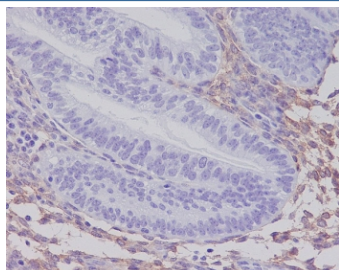


PDGFRB Antibody [clone AGG-16] (RQ5280)

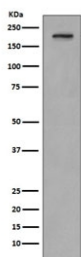
Catalog No.	Formulation	Size
RQ5280	Antibody in PBS with 0.02% sodium azide, 50% glycerol and 0.4-0.5mg/ml BSA	100 ul

[Bulk quote request](#)

Availability	1-2 weeks
Species Reactivity	Human
Format	Purified
Clonality	Rabbit Monoclonal
Isotype	Rabbit IgG
Clone Name	AGG-16
Purity	Affinity purified
UniProt	P09619
Localization	Cell membrane, cytoplasmic (lysosome)
Applications	Western Blot : 1:500-1:2000 Immunohistochemistry (FFPE) : 1:50-1:200
Limitations	This PDGFRB antibody is available for research use only.



IHC staining of FFPE human uterus tissue with PDGFRB antibody. HIER: boil tissue sections in pH6, 10mM citrate buffer, for 10-20 min and allow to cool before testing.



Western blot testing of human SH-SY5Y cell lysate with PDGFRB antibody. Expected molecular weight: 123-190 kDa depending on level of glycosylation.

Description

The protein encoded by the PDGFRB gene is a cell surface tyrosine kinase receptor for members of the platelet-derived growth factor family. These growth factors are mitogens for cells of mesenchymal origin. The identity of the growth factor bound to a receptor monomer determines whether the functional receptor is a homodimer (PDGFB or PDGFD) or a heterodimer (PDGFA and PDGFB). This gene is essential for normal development of the cardiovascular system and aids in rearrangement of the actin cytoskeleton. [RefSeq]

Application Notes

Optimal dilution of the PDGFRB antibody should be determined by the researcher.

Immunogen

A synthetic peptide specific to human PDGF Receptor beta / PDGFRB was used as the immunogen for the PDGFRB antibody.

Storage

Store the PDGFRB antibody at -20oC.