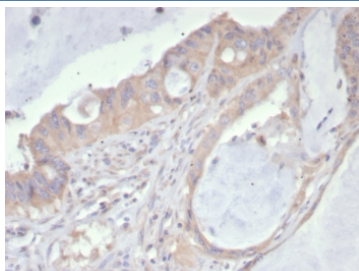


## PDGFRA Antibody / Platelet Derived Growth Factor Receptor alpha [clone PDGFRA/7407] (V5049)

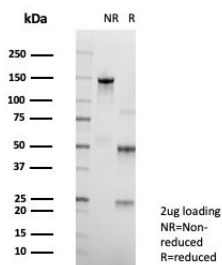
Catalog No.	Formulation	Size
V5049-100UG	0.2 mg/ml in 1X PBS with 0.1 mg/ml BSA (US sourced), 0.05% sodium azide	100 ug
V5049-20UG	0.2 mg/ml in 1X PBS with 0.1 mg/ml BSA (US sourced), 0.05% sodium azide	20 ug
V5049SAF-100UG	1 mg/ml in 1X PBS; BSA free, sodium azide free	100 ug

[Bulk quote request](#)

<b>Availability</b>	1-3 business days
<b>Species Reactivity</b>	Human
<b>Format</b>	Purified
<b>Host</b>	Mouse
<b>Clonality</b>	Monoclonal (mouse origin)
<b>Isotype</b>	Mouse IgG1, kappa
<b>Clone Name</b>	PDGFRA/7407
<b>Purity</b>	Protein A/G affinity
<b>UniProt</b>	P16234
<b>Localization</b>	Membrane
<b>Applications</b>	Immunohistochemistry (FFPE) : 1-2ug/ml for 30 min at RT
<b>Limitations</b>	This PDGFRA antibody is available for research use only.



IHC staining of FFPE human colon cancer tissue with PDGFRA antibody (clone PDGFRA/7407). HIER: boil tissue sections in pH 9 10mM Tris with 1mM EDTA for 20 min and allow to cool before testing.



SDS-PAGE analysis of purified, BSA-free PDGFRA antibody (clone PDGFRA/7407) as confirmation of integrity and purity.

## Description

Platelet-derived growth factor (PDGF) is a mitogen for mesenchyme- and glia-derived cells. PDGF consists of two chains, A and B, which dimerize to form functionally distinct isoforms, PDGF-AA, PDGF-AB and PDGF-BB. These three isoforms bind with different affinities to two receptor types, PDGFR-a and -beta, which are endowed with protein tyrosine kinase domains. PDGFR-a can bind to both A and B subunits of PDGF, while PDGFR-beta can only bind the B subunit. Ligand binding promotes either homo- or heterodimerization of the PDGF receptors in a specific manner. PDGF-AA induces the dimerization of two a receptors, PDGF-AB induces dimerization of aa and abeta and PDGF-BB induces the formation of three types of dimers, aa, abeta and betabeta. Translocation of the PDGFR-beta gene with the Tel gene is linked to chronic myelomonocytic leukemia (CMML), a myelodysplastic syndrome, and demonstrates the oncogenic potential of the PDGF receptors.

## Application Notes

Optimal dilution of the PDGFRA antibody should be determined by the researcher.

## Immunogen

A recombinant partial protein sequence (within amino acids 1-200) from the human protein was used as the immunogen for the PDGFRA antibody.

## Storage

Aliquot the PDGFRA antibody and store frozen at -20oC or colder. Avoid repeated freeze-thaw cycles.