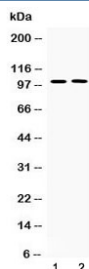


PDE5A Antibody (R32652)

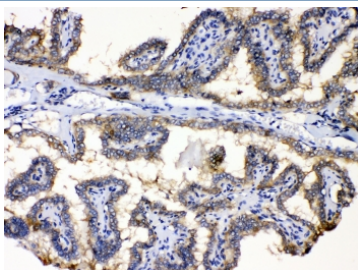
Catalog No.	Formulation	Size
R32652	0.5mg/ml if reconstituted with 0.2ml sterile DI water	100 ug

[Bulk quote request](#)

Availability	1-3 business days
Species Reactivity	Human, Rat
Format	Antigen affinity purified
Host	Rabbit
Clonality	Polyclonal (rabbit origin)
Isotype	Rabbit IgG
Purity	Antigen affinity
Buffer	Lyophilized from 1X PBS with 2.5% BSA, 0.025% sodium azide
UniProt	O76074
Localization	Cytoplasmic
Applications	Western Blot : 0.5-1ug/ml IHC (FFPE) : 1-2ug/ml
Limitations	This PDE5A antibody is available for research use only.



Western blot testing of 1) rat lung and 2) human PANC1 lysate with PDE5A antibody at 0.5ug/ml. Predicted molecular weight ~100 kDa (isoform 1).



IHC testing of FFPE human thyroid cancer tissue with PDE5A antibody at 1ug/ml. Required HIER: steam section in pH6 citrate buffer for 20 min and allow to cool prior to testing.

Description

cGMP-specific phosphodiesterase type 5 is an enzyme from the phosphodiesterase class. It is found in various tissues, most prominently the corpus cavernosum and the retina. It has also been recently discovered to play a vital role in the cardiovascular system. Furthermore, PDE5A also plays a role in signal transduction by regulating the intracellular concentration of cyclic nucleotides. This PDE5A gene is mapped to 4q26.

Application Notes

Optimal dilution of the PDE5A antibody should be determined by the researcher.

Immunogen

Amino acids 20-63 (QKQQQRDQDSVEAWLDDHWDFTFSYFVRKATREMVNAWFAERVH) from the human protein were used as the immunogen for the PDE5A antibody.

Storage

After reconstitution, the PDE5A antibody can be stored for up to one month at 4°C. For long-term, aliquot and store at -20°C. Avoid repeated freezing and thawing.