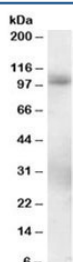


PDE5 Antibody (R34720)

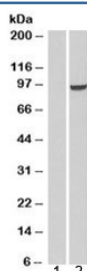
Catalog No.	Formulation	Size
R34720-100UG	0.5 mg/ml in 1X TBS, pH7.3, with 0.5% BSA (US sourced) and 0.02% sodium azide	100 ug

[Bulk quote request](#)

Availability	1-3 business days
Species Reactivity	Human
Predicted Reactivity	Rat, Dog, Cow
Format	Antigen affinity purified
Clonality	Polyclonal (goat origin)
Isotype	Goat Ig
Purity	Antigen affinity
Gene ID	8654
Applications	Western Blot : 0.3-1ug/ml ELISA (peptide) LOD : 1:16000
Limitations	This PDE5 antibody is available for research use only.



Western blot testing of human lung lysate with PDE5 antibody at 0.3ug/ml. Predicted molecular weight: ~100/95 kDa (isoforms 1/2).



Western blot of HEK293 lysate overexpressing PDE5A probed with PDE5 antibody (mock transfection in lane 1). Predicted molecular weight: ~100/95 kDa (isoforms 1/2).

Description

Additional name(s) for this target protein: Phosphodiesterase 5A; PDE5A

Application Notes

Optimal dilution of the PDE5 antibody should be determined by the researcher.

Immunogen

Amino acids LINGESGQAKRN were used as the immunogen for this PDE5 antibody. This sequence is common to isoforms 1 and 2.

Storage

Aliquot and store the PDE5 antibody at -20oC.