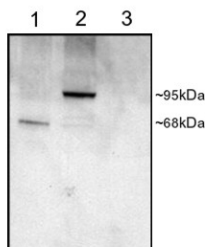


## PDE4D Antibody (R35386)

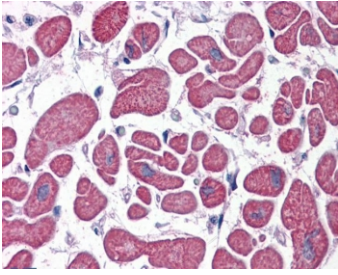
Catalog No.	Formulation	Size
R35386-100UG	0.5 mg/ml in 1X TBS, pH7.3, with 0.5% BSA (US sourced) and 0.02% sodium azide	100 ug

[Bulk quote request](#)

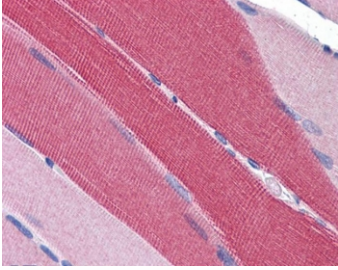
<b>Availability</b>	1-3 business days
<b>Species Reactivity</b>	Human
<b>Format</b>	Antigen affinity purified
<b>Host</b>	Goat
<b>Clonality</b>	Polyclonal (goat origin)
<b>Isotype</b>	Goat Ig
<b>Purity</b>	Antigen affinity
<b>Gene ID</b>	5144
<b>Localization</b>	Cytoplasmic, membranous
<b>Applications</b>	Western Blot : 1-3ug/ml IHC (FFPE) : 5ug/ml Enzyme ImmunoAssay : binds recombinant protein ELISA (peptide) LOD : 1:128000
<b>Limitations</b>	This PDE4D antibody is available for research use only.



Western blot testing of COS cell lysates with PDE4D antibody at 1ug/ml: 1) transfected with human PDE4D1 (~91 kDa), 2) transfected with human PDE4D3 (~85 kDa), 3) untransfected.



IHC testing of FFPE human heart tissue with PDE4D antibody at 5ug/ml. Required HIER: steamed antigen retrieval with pH6 citrate buffer; AP-staining.



IHC testing of FFPE human skeletal muscle tissue with PDE4D antibody at 5ug/ml. Required HIER: steamed antigen retrieval with pH6 citrate buffer; AP-staining.

## Description

Additional name(s) for this target protein: Phosphodiesterase 4D

## Application Notes

Optimal dilution of the PDE4D antibody should be determined by the researcher.

## Immunogen

Amino acids QPEACVIDDRSPDT were used as the immunogen for this PDE4D antibody. This sequence is common to PDE4D1 (~91kDa), PDE4D2 (~77kDa) and PDE4D3 (~85kDa).

## Storage

Aliquot and store the PDE4D antibody at -20oC.